

A Case of the 10 days

Case 377

A seventy-eight-year-old female presented in our hospital for anal pain. The pain was too strong for a little finger to be inserted into anus. The lesion was found in the subcutaneous dorsal side of rectum. Then, for further investigation, CT (Fig.1) and MRI (Figs. 2, 3) are taken.



Fig.1 A lesion with smooth margin below tailbone is depicted on axial (A), sagittal (B) and coronal (C)CT.

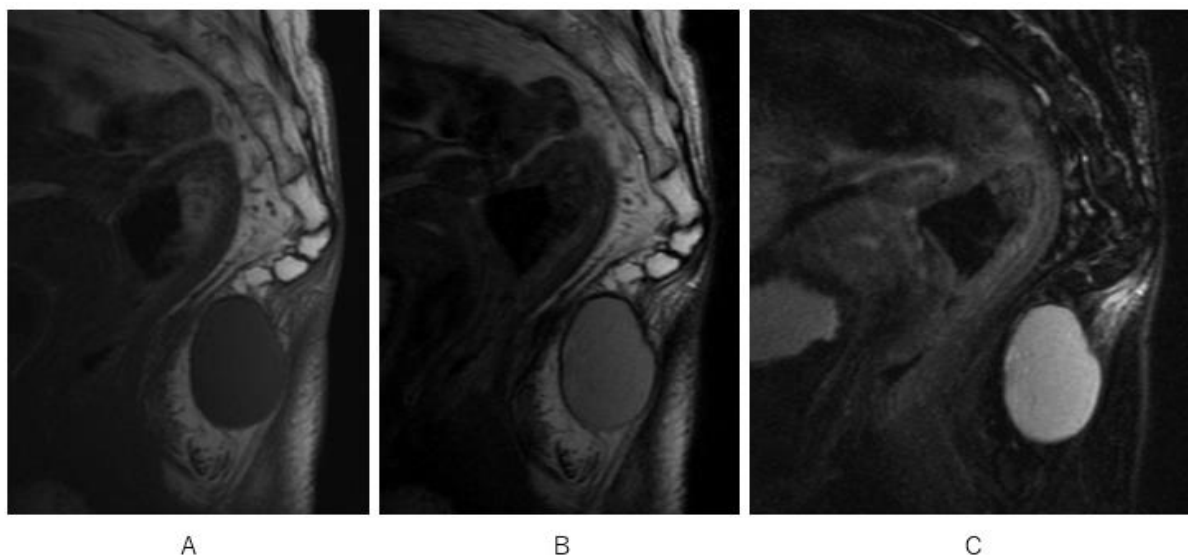
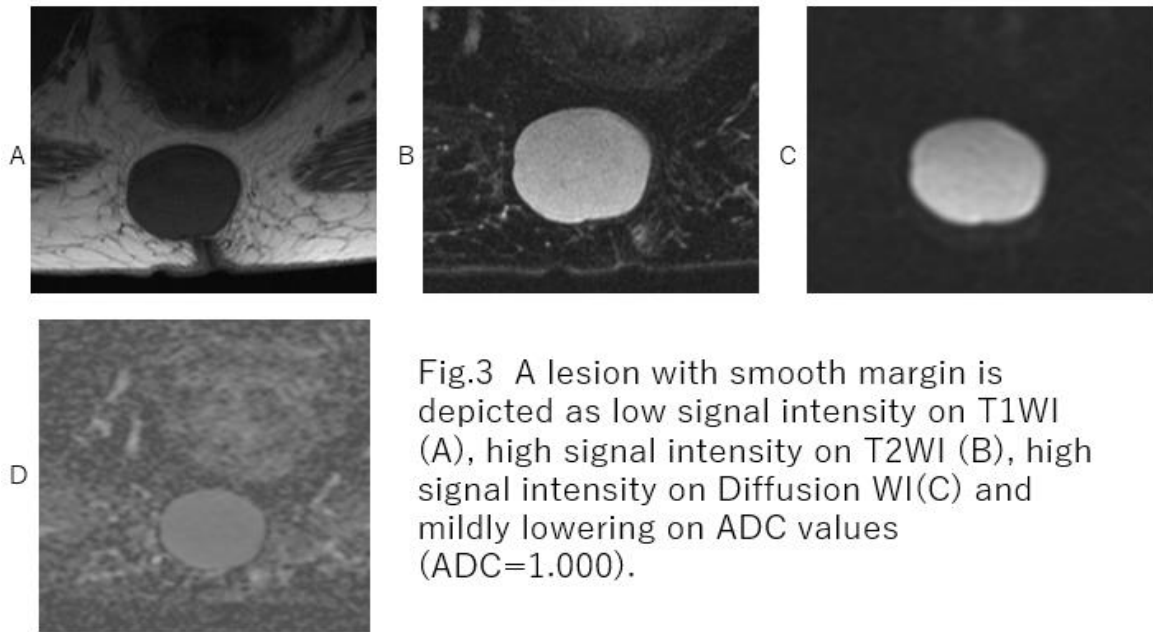


Fig.2 A lesion with smooth margin is depicted below tailbone as low signal intensity on sagittal T1WI (A), grey-dark intensity on T2WI(B) and high signal intensity on fat suppression T2WI(C).



What is the imaging diagnosis?

1. Lipoma
2. Neurinoma
3. Epidermal cyst
4. Pilonidal cyst

answer

2025.3.7