

A Case of the 10 days

Case 376

An eighty-four-year-old male presented in our hospital for bilateral palsy. He felt right numbness at right lateral side of right lower extremity from mid-last month. At midnight two days before, bilateral numbness of bilateral extremities and motor palsy emerged. The following morning, he went to a local hospital and was told that spinal vertebrae compressed spinal nerves. The lower motor palsy did not improve. Then, he came to our hospital for further investigation. Dysuria and defecation disorders have been experienced for the previous two days. Medical findings revealed he lost sensation of pain and touch at Th10 level or lower. He took spine MRI and thoraco-abdominal CT (Figs 1-3).

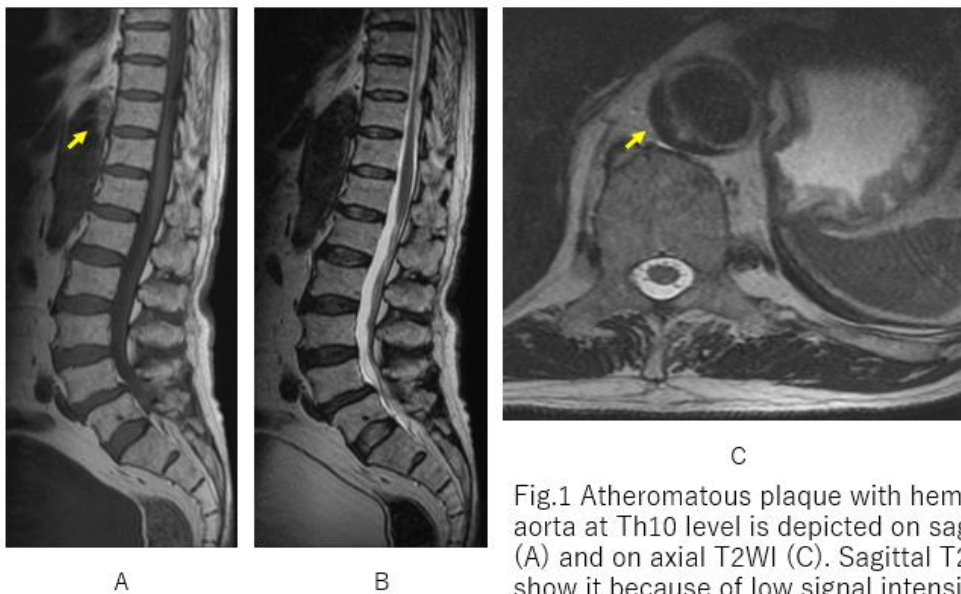


Fig.1 Atheromatous plaque with hemorrhage of aorta at Th10 level is depicted on sagittal T1WI (A) and on axial T2WI (C). Sagittal T2WI did not show it because of low signal intensity of hemorrhage overlapped low signal intensity of flow void in aorta.

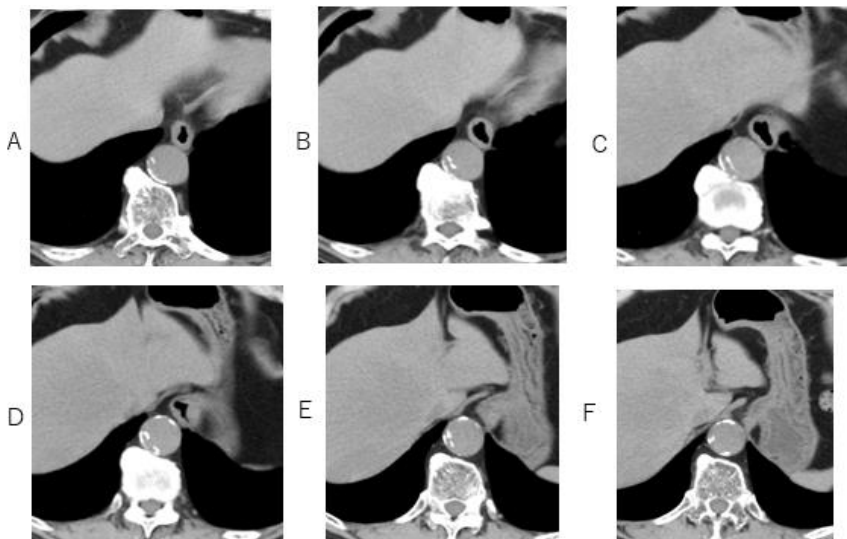


Fig.2 Atheromatous plaque with calcification of aorta is depicted as thick layer on axial CT (A-F).

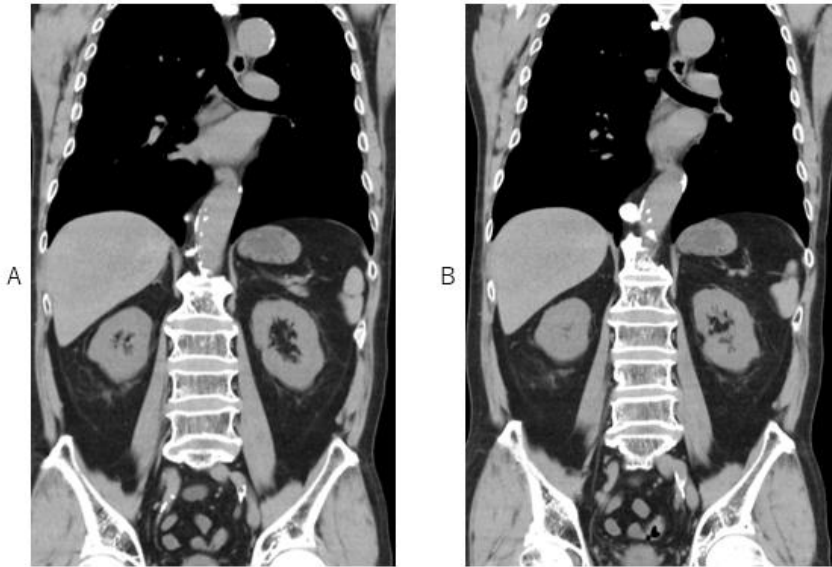


Fig. 3 Atheromatous plaque with calcification is depicted at right mural of thoraco-abdominal aorta (A, B).

What is the imaging diagnosis?

1. Neuromyelitis optica spectrum disease
2. Multiple sclerosis
3. Sarcoidosis
4. Syphilis
5. Adamkiewicz occlusion due to aortic dissection

answer

2025.2.28