

A Case of the 10 days

Case 375

A fifty-nine-year-old male presented for appetite loss and fragile slender. He usually got a meal per day. He had lost weight loss of 20kg for previous 2 years. Laboratory test revealed hemoglobin 4.6g/dL, albumin 2.1g/dL, white blood cells 6420/mm³, CRP 0.42mg/dL. He took abdomen CT for further investigation. (Figs 1-4).

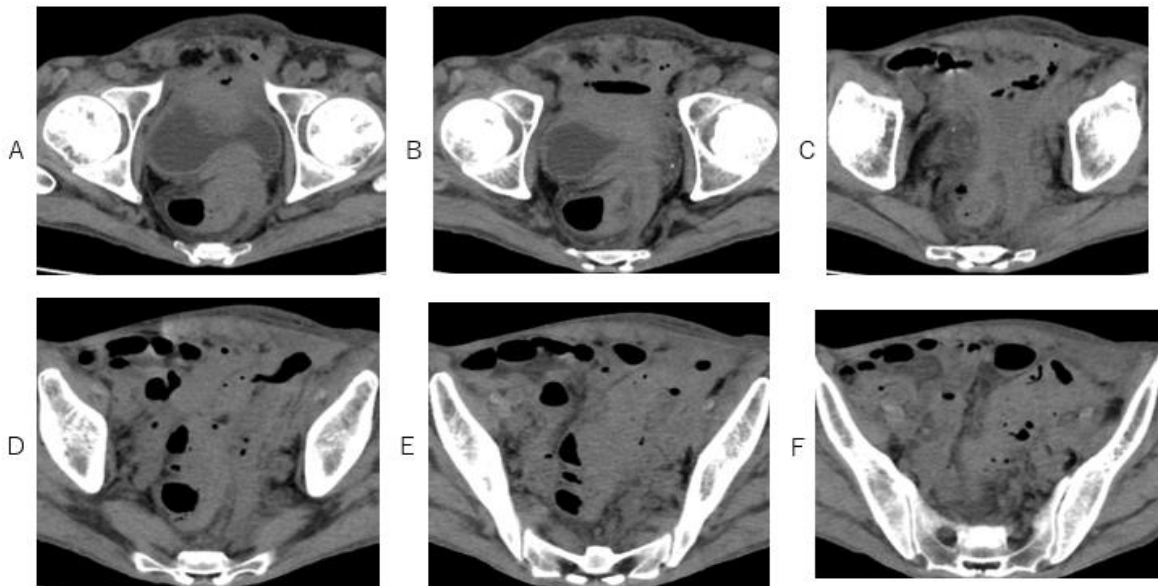


Fig.1 A lesion arisen from upper margin of the urinary bladder protrudes into urinary bladder lumen (A, B) and grows to the outside to urinary bladder mural with air fluid level on non-enhanced axial CT (C-F) . The lesion with air fluid level extends to the surroundings of sigmoid colon (D-F).

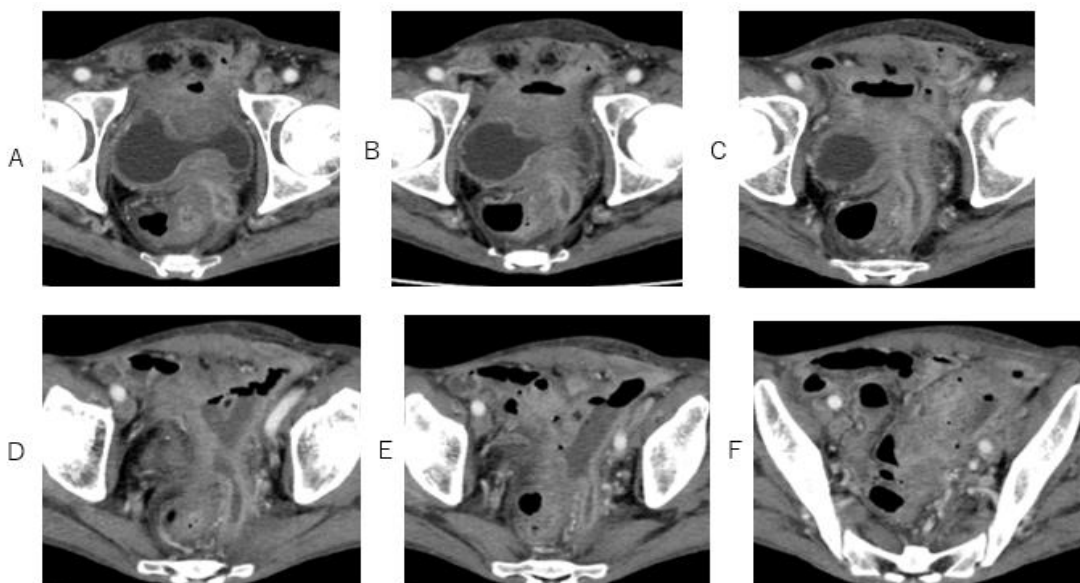


Fig. 2 A lesion arisen from upper margin of the urinary bladder protrudes into urinary bladder lumen (A, B) and grows to the outside to urinary bladder mural with air fluid level on contrast-enhanced axial CT (A-E) . The lesion with air fluid level extends to the surroundings of sigmoid colon and rectum (A-F).

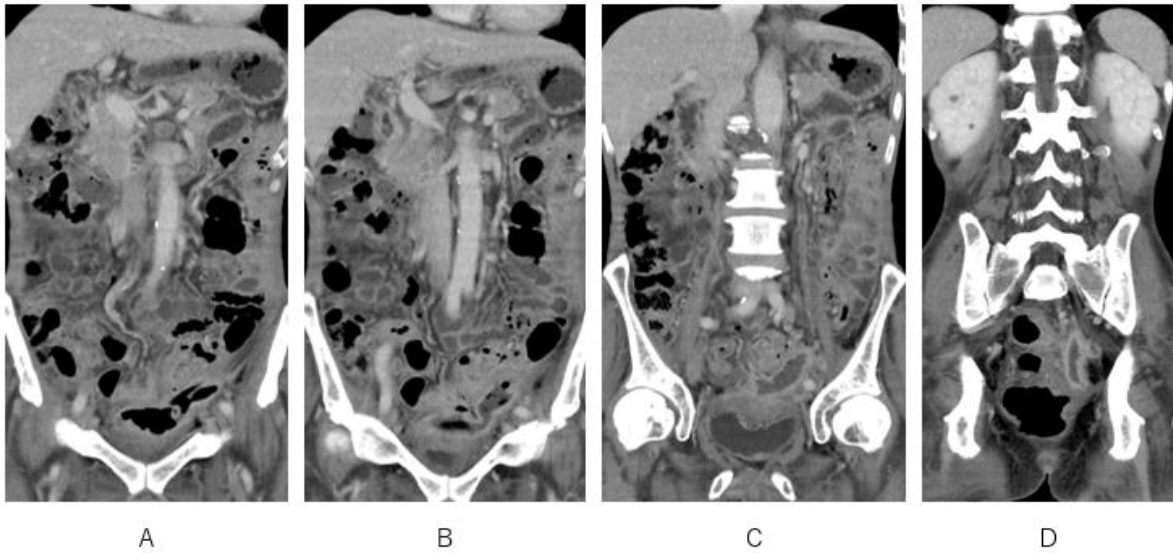


Fig. 3 A lesion arisen from upper margin of the urinary bladder protrudes into urinary bladder lumen (C) and grows to the outside to urinary bladder mural with air fluid level on enhanced axial CT (A-D) . The lesion with air fluid level extends to the surroundings of sigmoid colon (A-D).

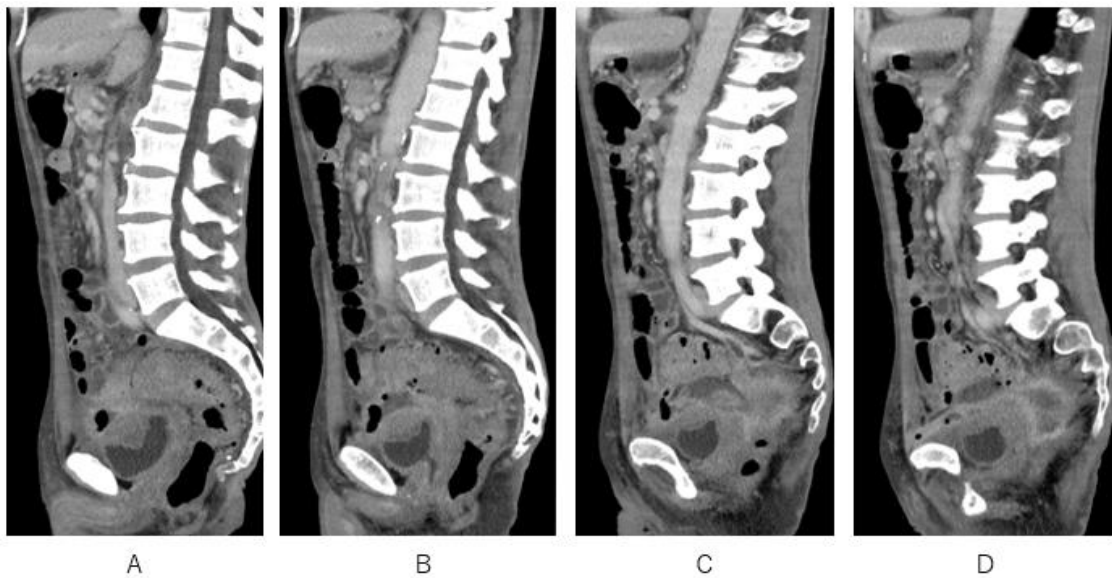


Fig.4 A lesion arisen from upper margin of the urinary bladder protrudes into urinary bladder lumen (A-C) and grows to the outside to urinary bladder mural with air fluid level on enhanced axial CT (A-D) . The lesion with air fluid level extends to the surroundings of sigmoid colon (A-D).

What is the imaging diagnosis?

1. Sigmoid colon cancer
2. Urachal cancer
3. Urachal abscess
4. Bladder cancer

answer

2025.2.21