

## A Case of the 10 days

### Case 374

A sixty-year-old female was transported at 3 AM by an ambulance car for abdominal pain. She experienced vomiting after lunch at noon and thereafter, abdominal pain at 3PM yesterday. Her abdominal pain increased at midnight and emergent coming was requested. Laboratory test revealed white blood cells 11260/mm<sup>3</sup>, CRP 2.12 mg/dL, CEA 56 ng/mL CA19-9 178 U/mL, CA125 100.5 U/mL. She took abdominal CT for further investigation (Figs 1-3).

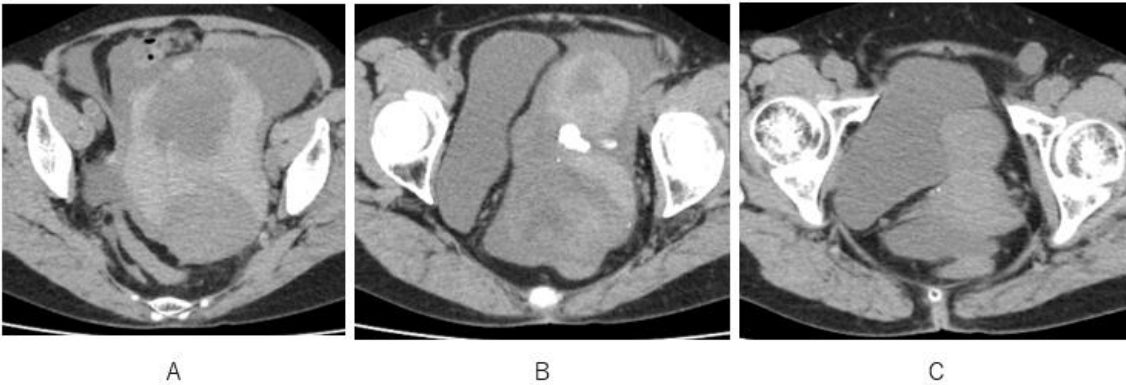


Fig.1 Ascites, a large mass composed of low attenuation, iso-attenuation, and morphologic calcification are depicted on axial CT.

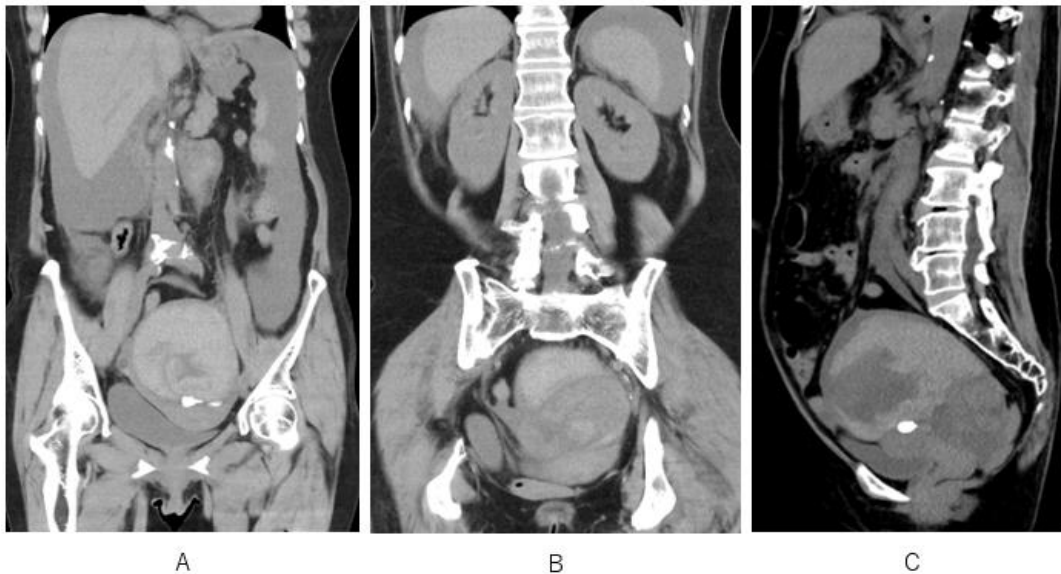


Fig.2 Ascites, a large mass with iso-attenuation, low attenuation and calcification are depicted on coronal CT (A, B) and sagittal CT(C).

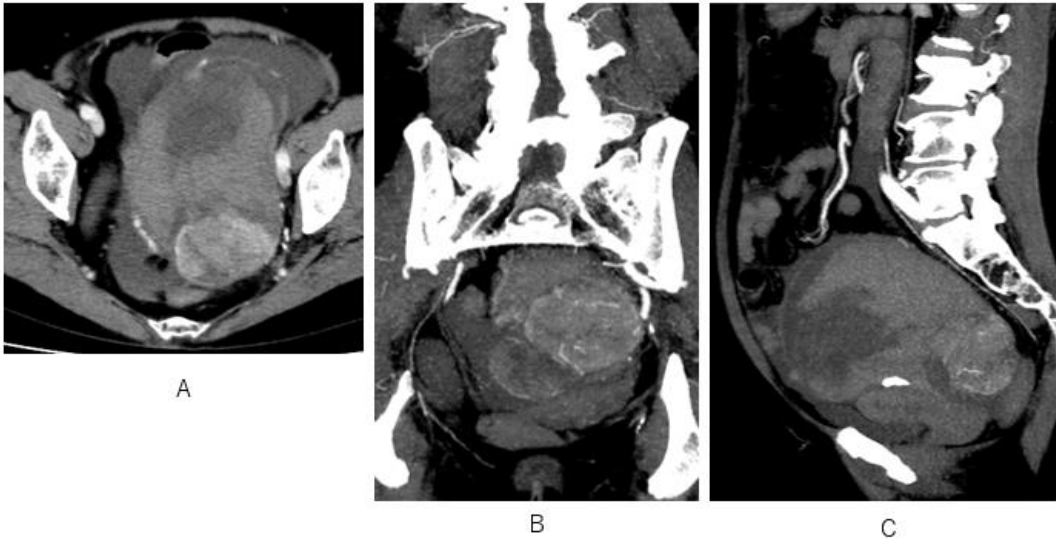


Fig. 3 Contrast-enhanced CT shows a large cystic mass composed of hyper-vascular mass isoattenuation fluids and low attenuation fluids (A-C), and ascites (A, B).

What causes bleeding from ovary of mature female?

- A. Extrauterine pregnancy
- B. Ovarian cyst
- C. Endometrial cyst
- D. Teratoma

1.A,B 2.B,C 3.C,D 4.All

answer

2025.2.14