

## A Case of the 10 days

### Case 373

A seventy-one-year-old female slipped, fell on the road, and injured right knee yesterday. Her right knee swollen gradually more and then; she came to our hospital. She took knee radiograph and knee CT (Figs 1-5).

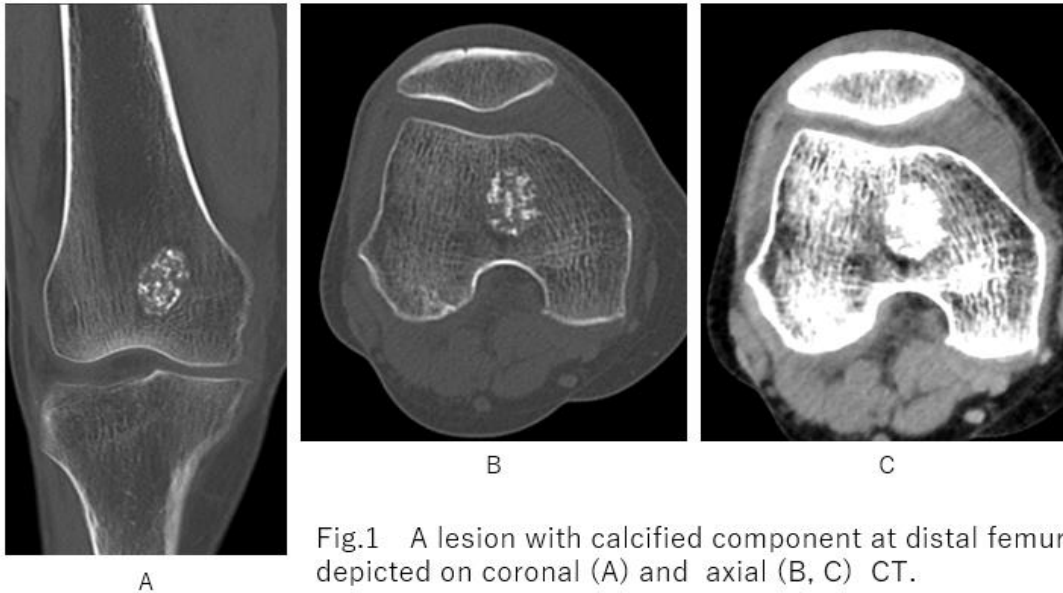


Fig.1 A lesion with calcified component at distal femur is depicted on coronal (A) and axial (B, C) CT.

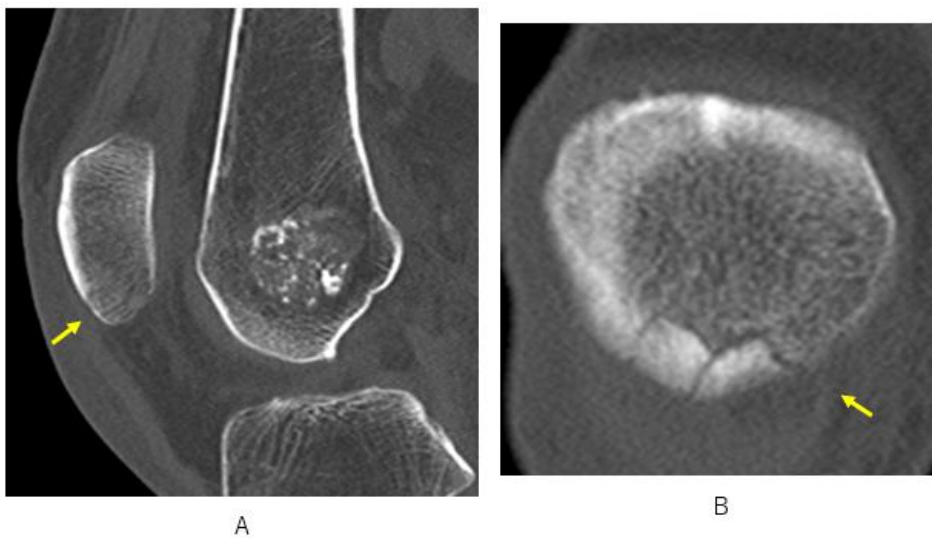


Fig.2 A lesion with calcification at distal femur and fracture line (arrow) of patella are depicted on sagittal CT (A). Pleural fracture lines of patella are depicted on magnificent coronal CT.

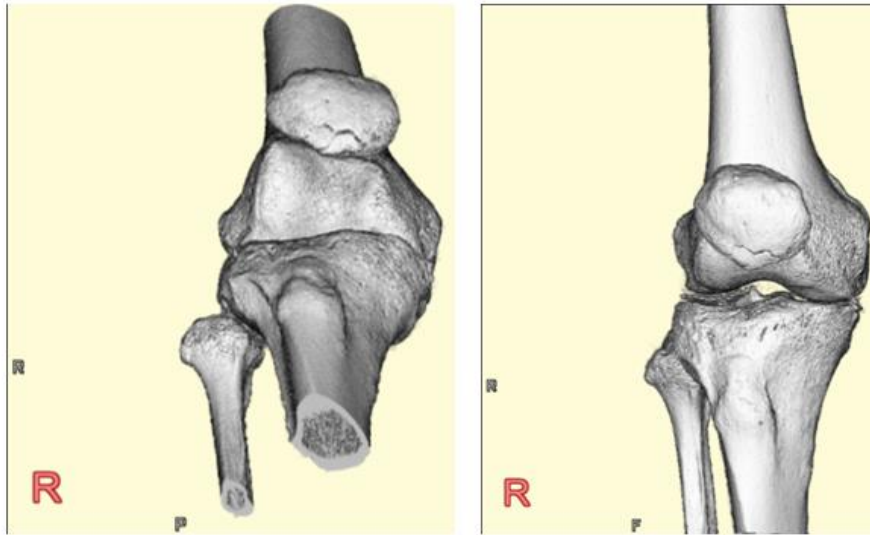


Fig.3 Volume rendered image of right knee joint depict a transverse fracture line of patella.

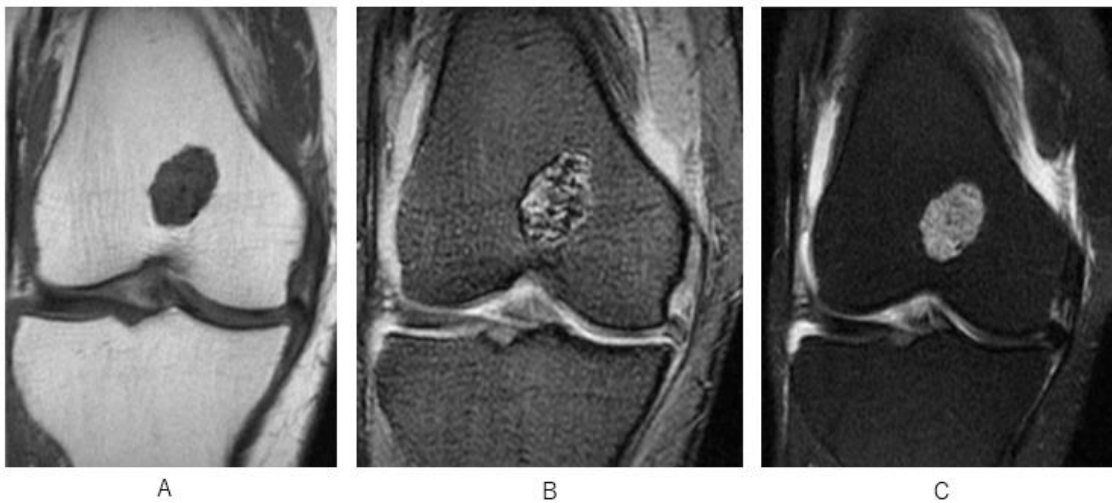


Fig.4 A lesion at distal femur is depicted homogeneous low signal intensity on T1WI(A), high signal intensity including low signal intensity spots on T2WI(B) and predominantly high signal intensity on heavy T2WI (C).

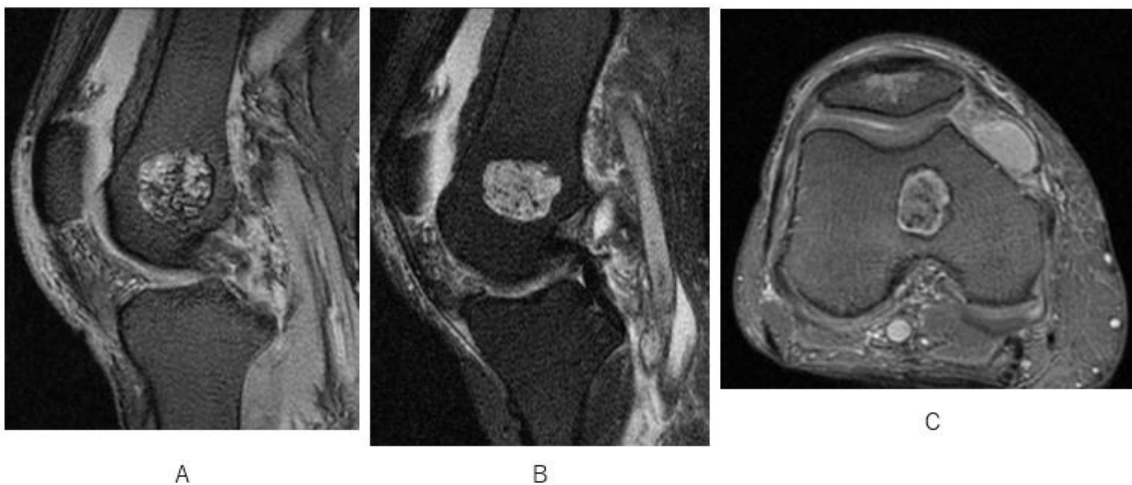


Fig.5 A lesion with high signal intensity including low signal intensity spots is depicted on sagittal T2WI (A), fat suppression T2WI (B), and axial T2WI (C).

What is imaging diagnosis of the lesion of distal femur?

---

1. **Metastatic bone tumor**
2. **Bone contusion**
3. **Chondrosarcoma**
4. **Enchondroma**

answer

2025.2.7