

A Case of the 10 days

Case 367

A fifteen-year-old male presented in our hospital for bone extrusion of right lower extremity. He left it though he realized the extrusion unknown years ago because of no pain. The class teacher advised him to check in hospital. Present illness revealed a bone-like extrusion at mid-lower of right lower leg. He took lower extremity radiograph (Fig.1) and CT (Fig.2).

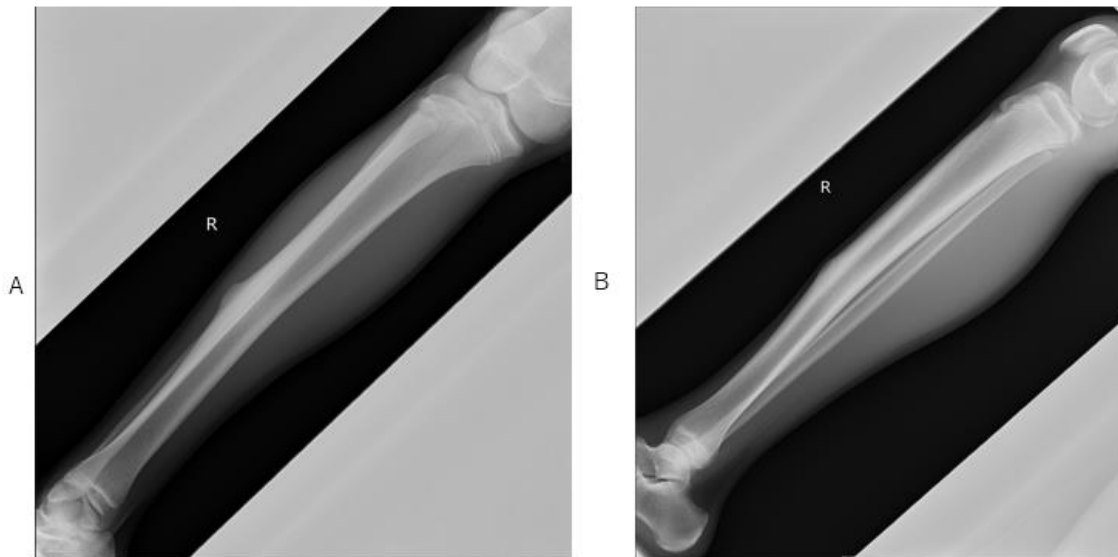


Fig.1 Radiographs of lower leg depict a lesion with gradual rising thickening of bone cortex at anterior tibia (A, B).

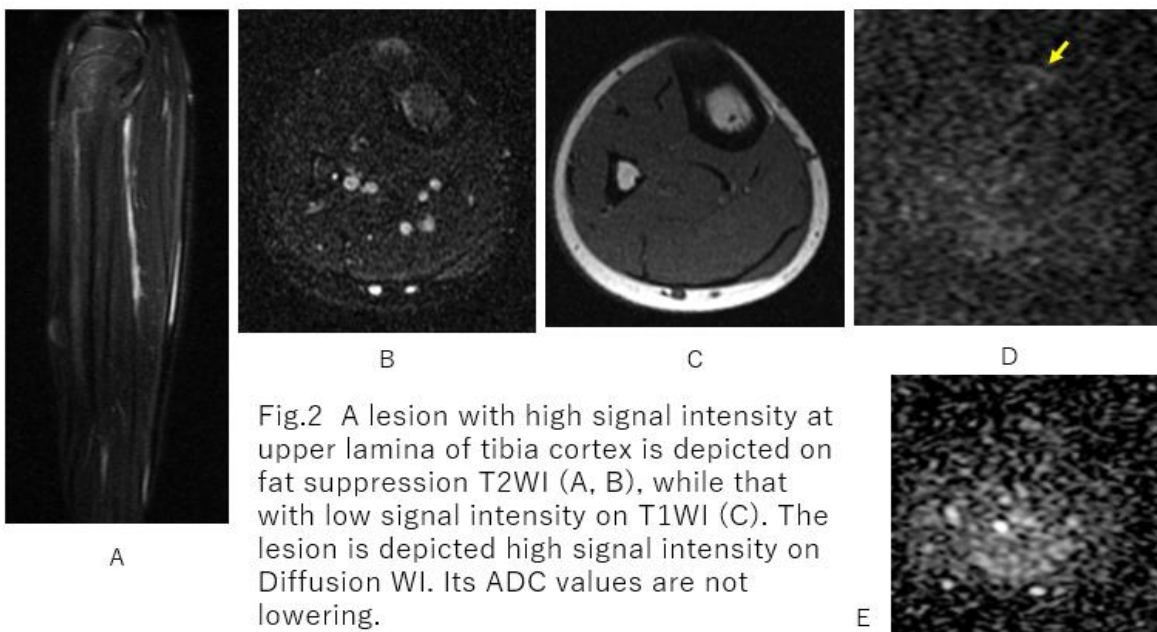


Fig.2 A lesion with high signal intensity at upper lamina of tibia cortex is depicted on fat suppression T2WI (A, B), while that with low signal intensity on T1WI (C). The lesion is depicted high signal intensity on Diffusion WI. Its ADC values are not lowering.

What is imaging diagnosis?

1. Osteoma
2. Osteochondroma
3. Osteosarcoma
4. Ossifying fibroma
5. Non-ossifying fibroma

answer

2024.12.20