

A Case of the 10 days

Case 365

A seventy-year-old female presented in our hospital for nausea and epigastralgia (upper abdominal pain). She experienced appendectomy. She took abdomen CT for further investigation (Figs 1, 2).

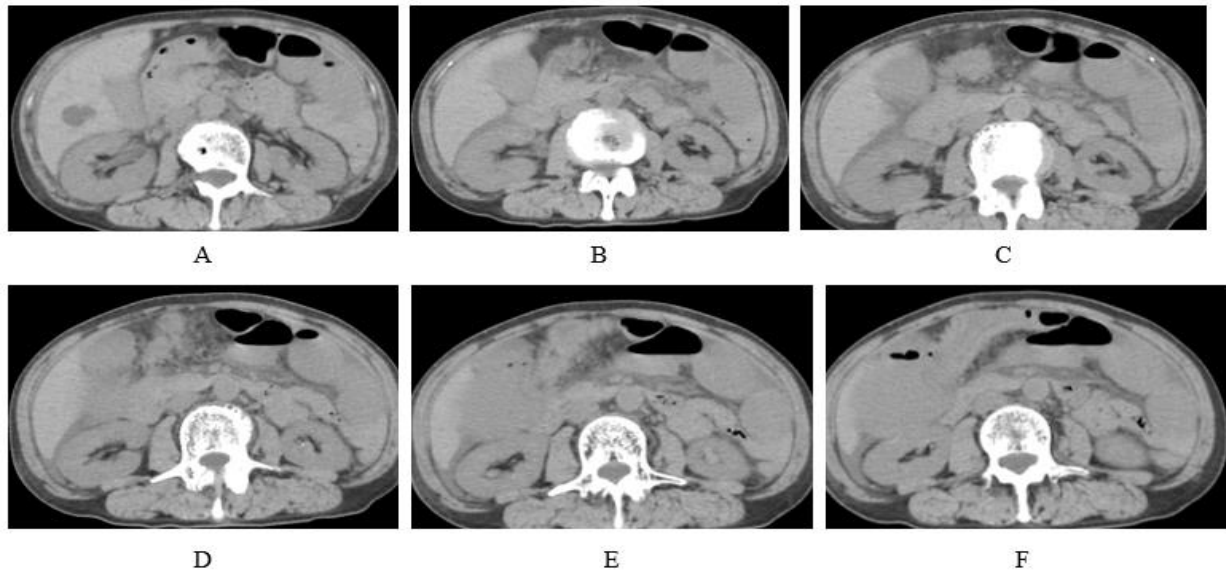


Fig.1 Constrictive transverse colon with distorted margin (B-E) is depicted on axial abdomen CT. Edematous transverse mural (F) and marked dilated ascending colon (E, F) is associated. Note small nodules are present on mesentery surrounding transverse colon (D, E).

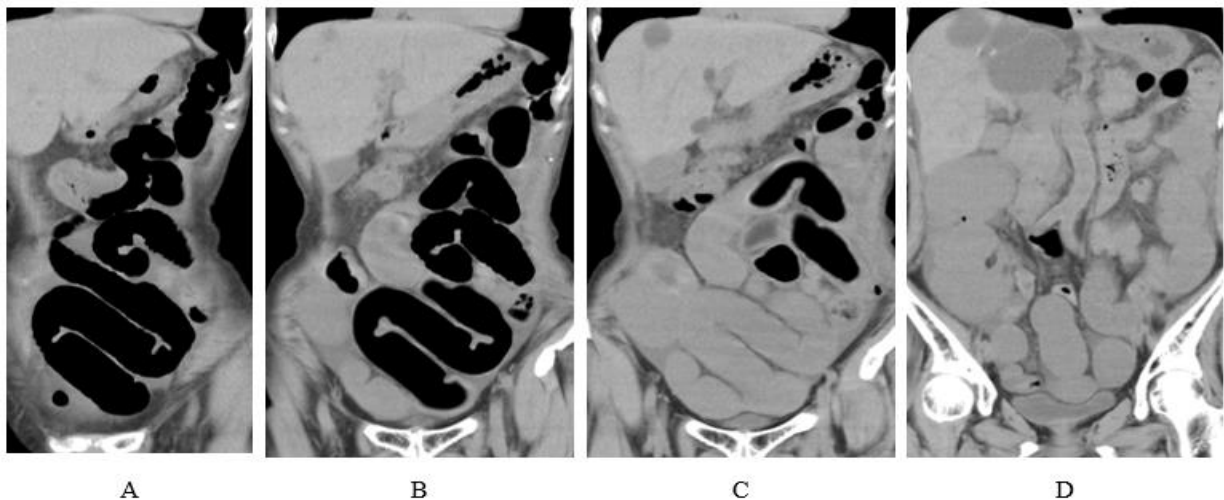


Fig.2 Constrictive transverse colon with distorted margin is depicted, associated with small nodules present in the adjacent mesentery on coronal CT (A-C). Ascending colon is markedly dilated (D).

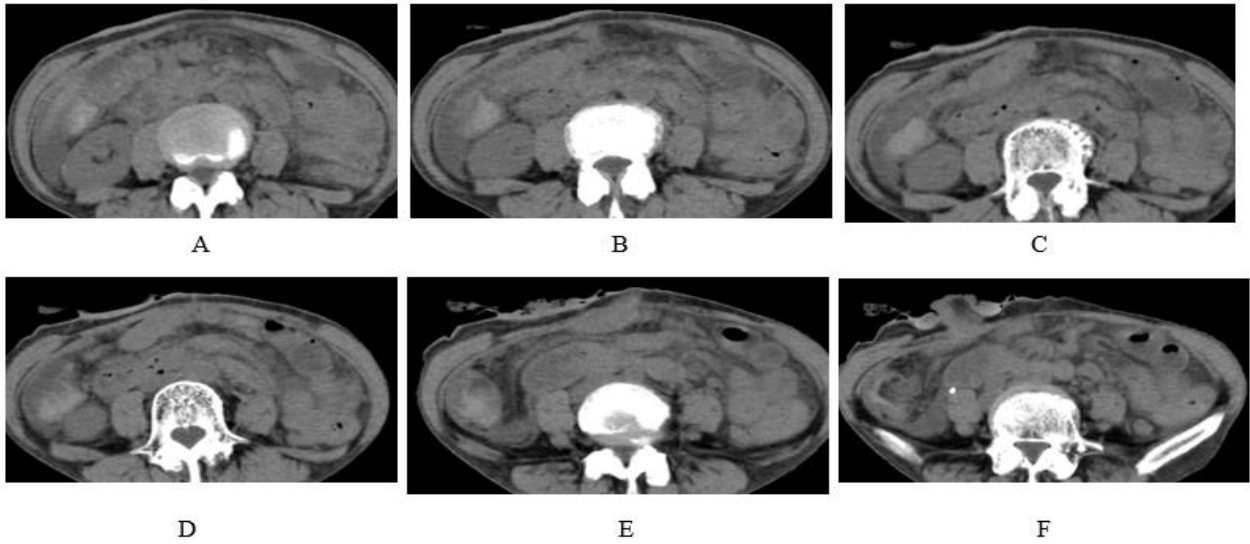


Fig.3 Five months later, transverse colon with edematous mural is depicted on CT (A-E). Artificial anus is constructed for stool passage and chemotherapy (F).

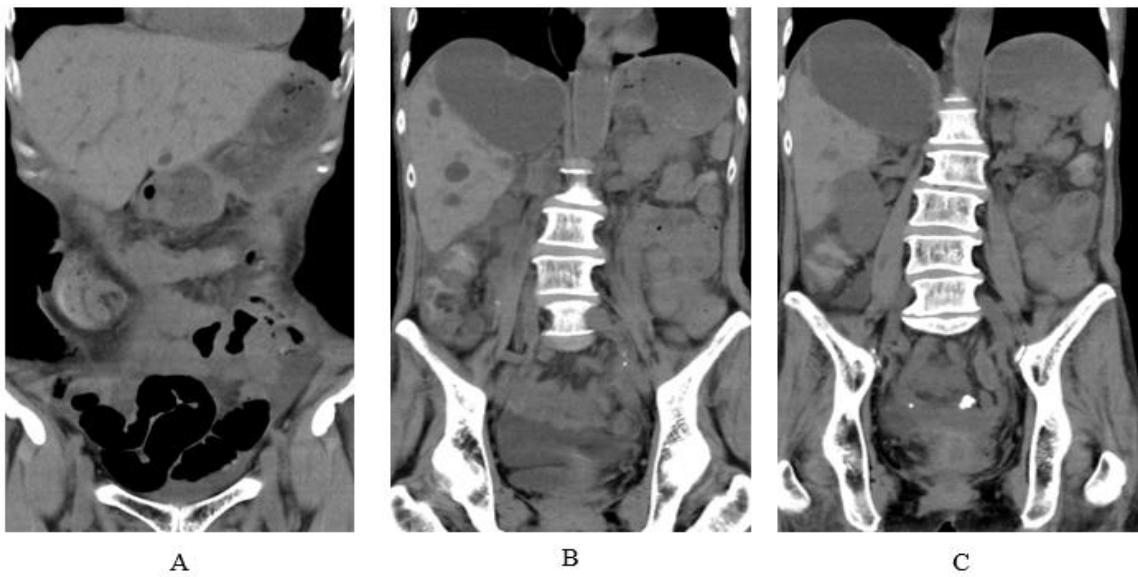


Fig.4 Five months later, transverse colon with edematous mural is depicted on coronal CT (A-C). Note ascending colon and cecum is not so dilated as five months before (A-C).

What is imaging diagnosis?

1. Colon cancer (Borrmann IV type)
2. Malignant lymphoma
3. Gastric cancer with disseminated invasion to transverse colon
4. Colon submucosal tumor
5. Colon tuberculosis

answer

2024.12.6