

A Case of the 10 days

Case 364

A sixty-seven-year-old male presented in our hospital for right eye to being hard to be visible and to open. These symptoms began two weeks ago and went worse. He took face CT for further investigation (Figs 1-3).

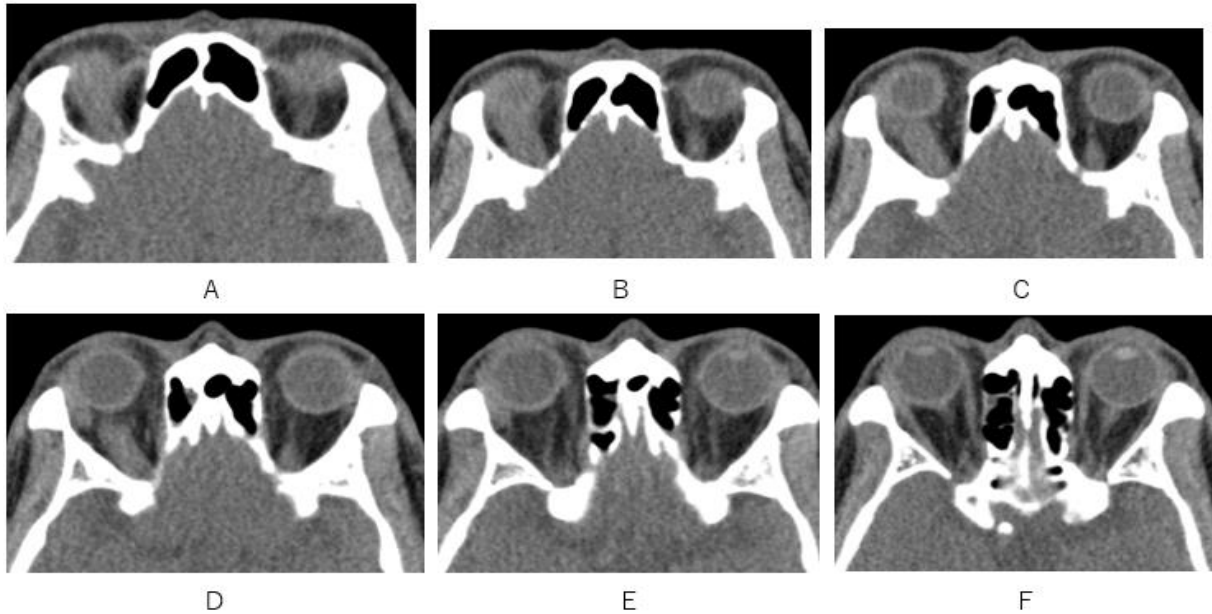


Fig.1 Superior rectus orbital muscle (A-D) and lateral rectus orbital muscle (C-F) are swollen in right eye on axial CT.

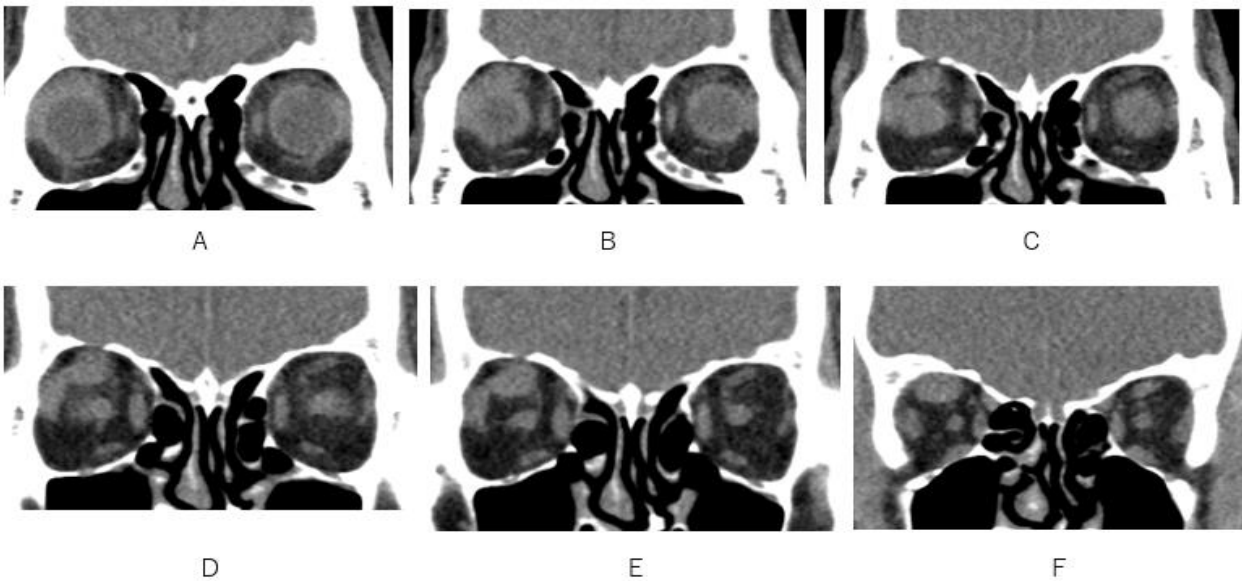


Fig.2 Swollen superior rectus muscle (A-F) and lateral rectus muscle (A-F) are depicted on coronal CT.

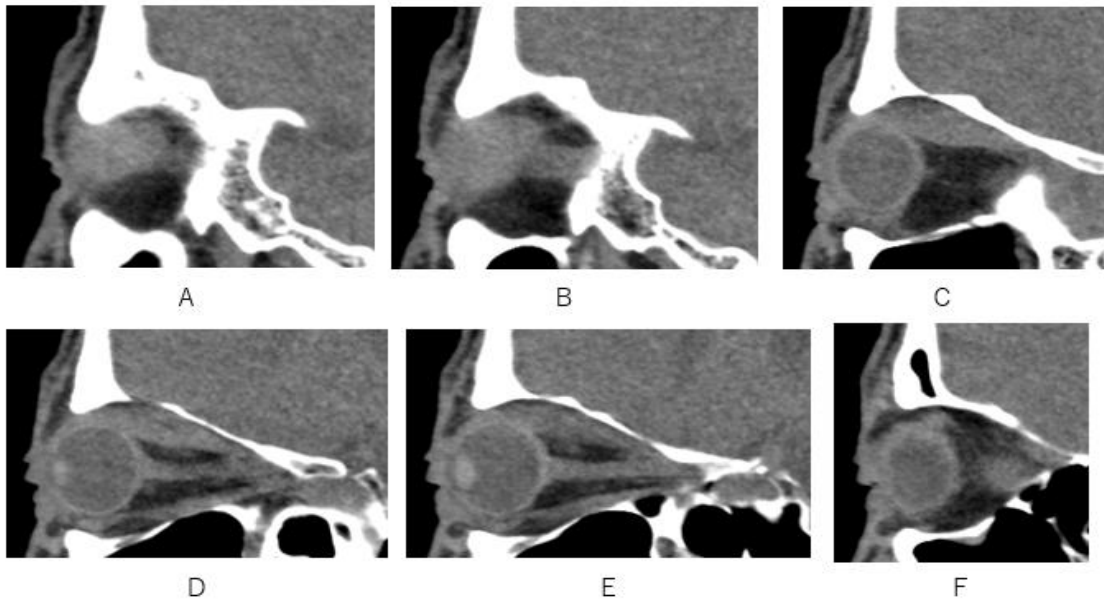


Fig.3 Swollen lateral rectus orbital muscle (A, B) and superior rectus orbital muscle (C-E) are depicted on sagittal CT.

What is imaging diagnosis?

1. Sagging eye syndrome
2. Thyrotoxic extraocular myopathy
3. Pseudotumor
4. Optic glioma

answer

2024.11.29