

## A Case of the 10 days

### Case 363

An eighty-year-old male was transported by an ambulance to our hospital for weakness of upper and lower extremities. This morning, his wife found him lying on floor with weakness of extremities. His past illness history revealed he experienced myocardial infarction, brain infarction, diabetes mellitus, hypertension and gout. His blood pressure was 80mmHg and heart rate 100/min. Laboratory test revealed white blood cells 32680/mm<sup>3</sup>, neutrocytes 94.2%, Hemoglobin 15.2g/dL, D dimer 34.1microgm/mL. He took body CT for further investigation (Figs 1-3).

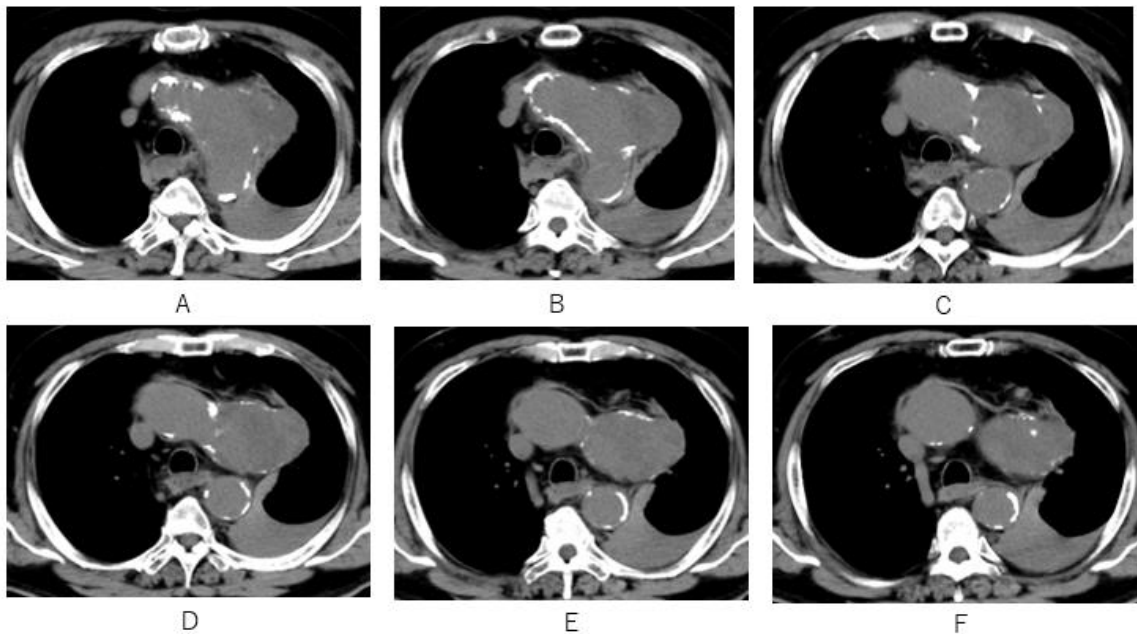


Fig.1 Aortic arch aneurysm with rupture to left pleural space, hemothorax (CT value 44 ) is depicted on chest CT. The diameter of aortic arch aneurysm is 57.9mm and its CT values are 41HU.

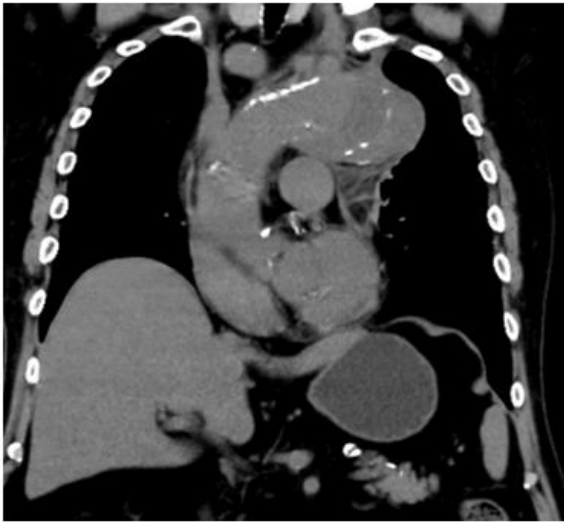


Fig.2 Aortic arch aneurysm with periaortic hematoma is depicted on coronal CT.



Fig.3 Aortic arch aneurysm with periaortic hematoma and hemothorax is depicted on sagittal CT.

## What is imaging diagnosis?

---

1. Dissecting aortic aneurysm
2. Atheromatous penetrating aneurysm
3. Impending thoracic aortic rupture
4. Sealed thoracic aortic rupture
5. Open thoracic aortic rupture

answer