

A Case of the 10 days

Case 362

This week, we focus on chemotherapy for unresectable pancreas cancer although effectiveness of each chemotherapy is not yet to control pancreas cancer. At present of time of 2024, what is it that the most preferable combination of chemotherapy is recommended?

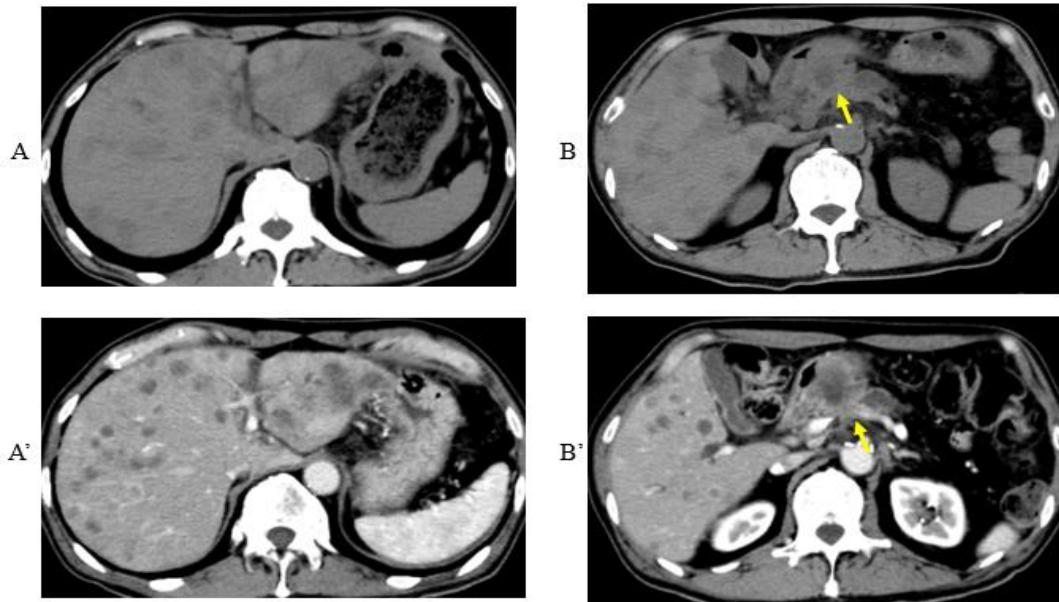


Fig.1 Non-enhanced CT (A, B) and contrast-enhanced CT (A', B') depict pancreas body cancer (arrow) associated with low-attenuation, hypo-vascular metastatic liver tumors.

October 2023

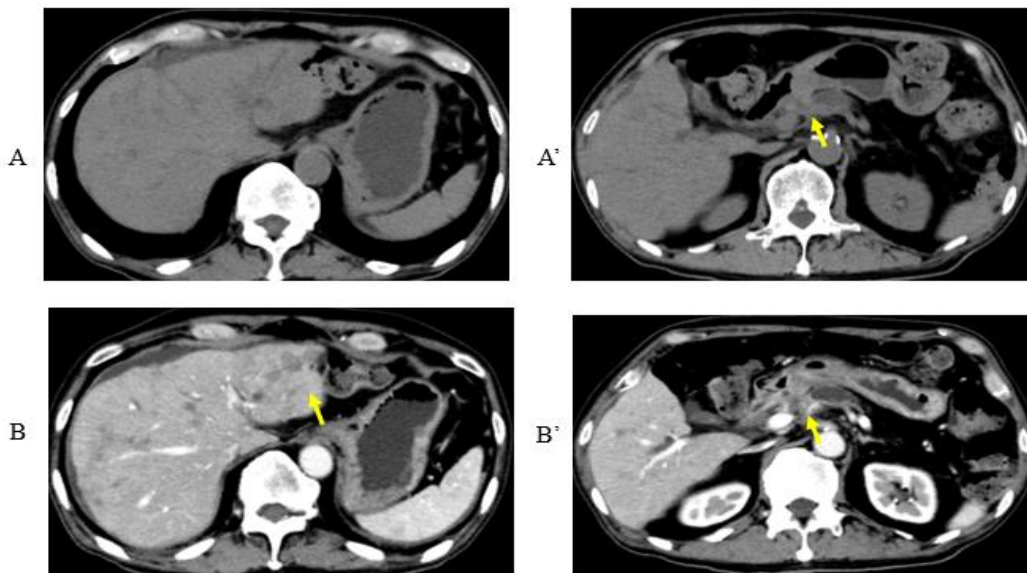


Fig.2 Five months after chemotherapy, marked decrease of pancreas cancer and metastatic liver tumors compared to before chemotherapy.

February 2024

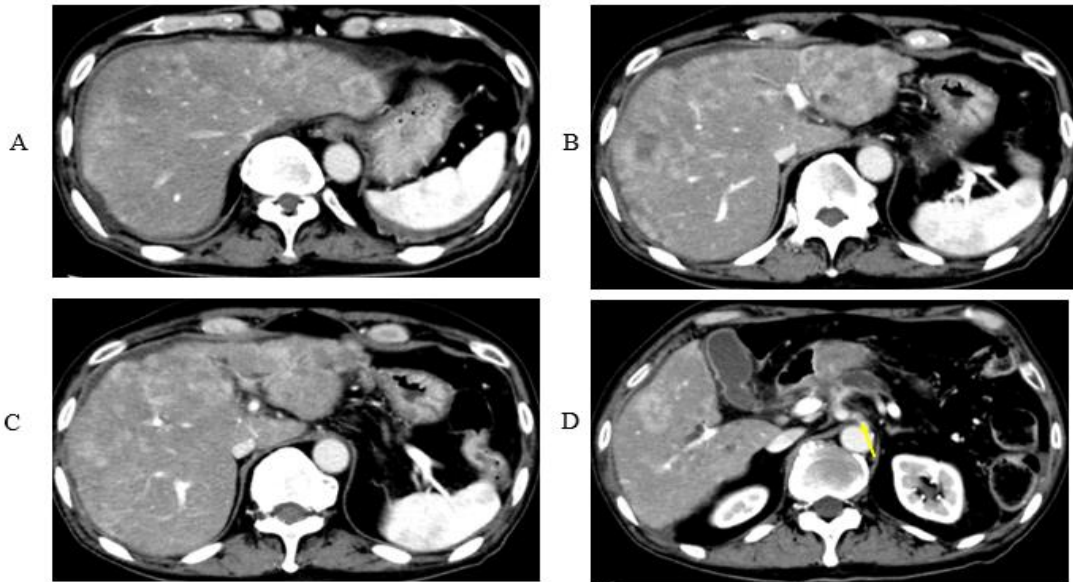


Fig.3 Seven months after, hyper-vascular metastatic tumors are growing in the whole liver, although pancreas cancer (arrow) preserves to remain shrinkage.

May 2024

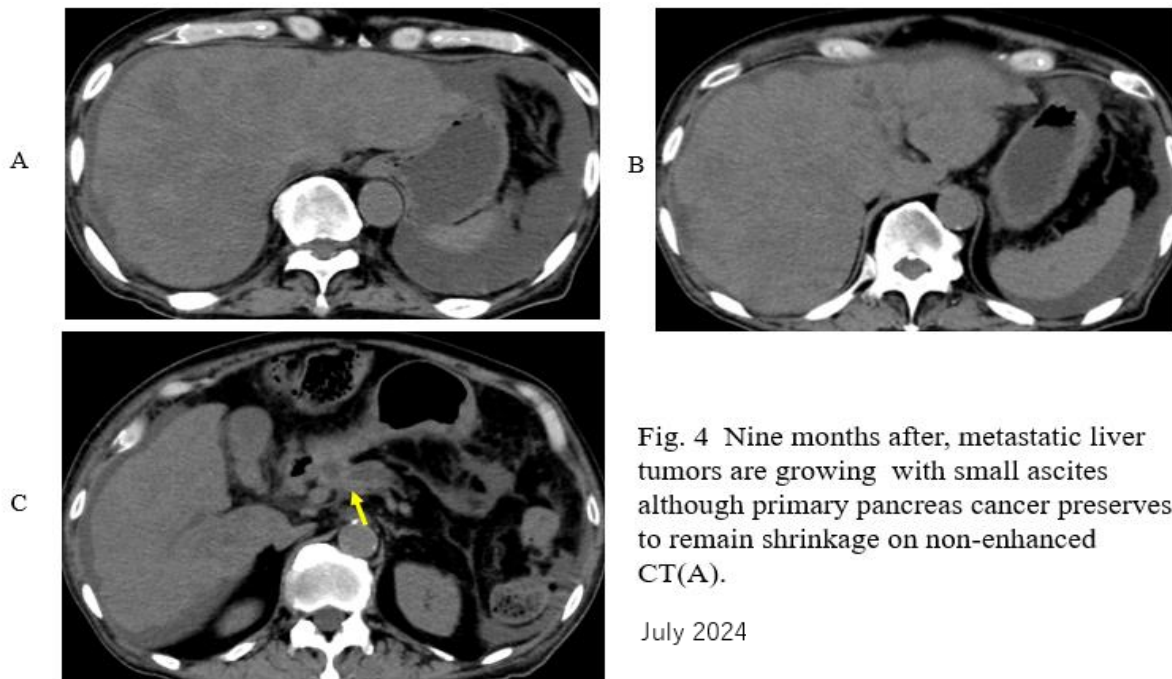


Fig. 4 Nine months after, metastatic liver tumors are growing with small ascites although primary pancreas cancer preserves to remain shrinkage on non-enhanced CT(A).

July 2024

What combination is most preferable for unresectable pancreas cancer?

1. Gemcitabine alone
2. S1 alone
3. Gemcitabine + S1
4. FOLFIRINOX
5. Gemcitabine + Nab paclitaxel

answer

2024.11.15