

A Case of the 10 days

Case 361

Case 1. A seventy-six-year-old male presented in our hospital for abdominal pain, nausea and vomiting. He received clinical diagnosis of incarcerated inguinal hernia at a local clinic. Laboratory test revealed white blood cell 11840/mm³, neutrophils 90.4%, CRP 7.14mg/dL, procalcitonin 6.66 mg/dL, BNP 2286.5pg/dL, total bilirubin 2.02mg/dL. He took abdomen CT for further investigation (Fig. 1).

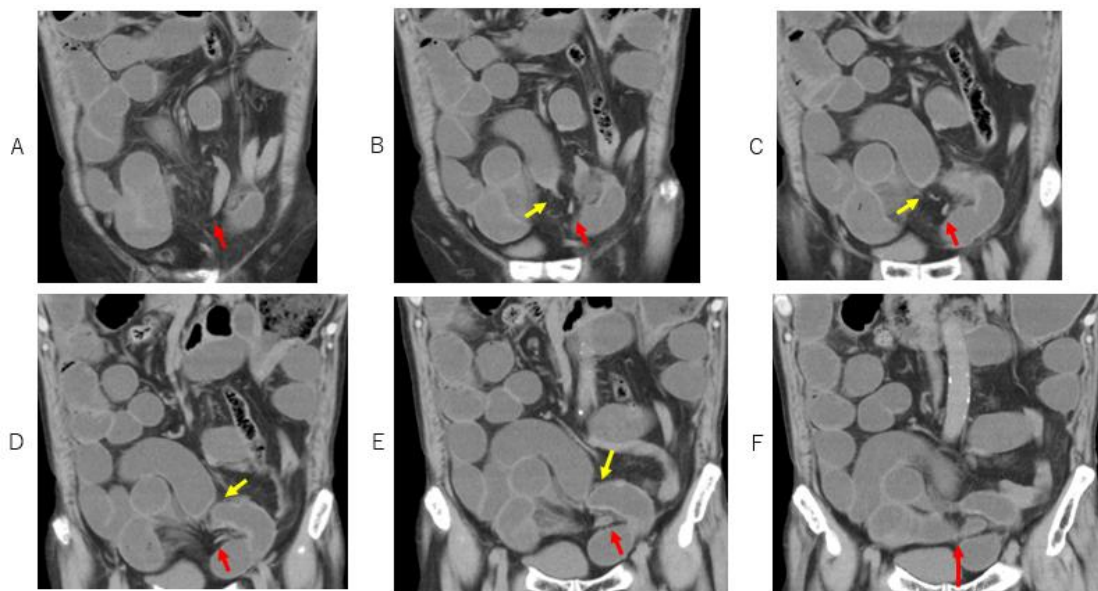


Fig.1 Case 1 Two beak signs are depicted on coronal CT; one, between dilated bowel and constrictive bowel (F to A, red arrow): another, between dilated bowel and dilated bowel (B-E), yellow arrow).

What is imaging diagnosis?

1. Infectious bowel disease
2. Adhesive ileus
3. Strangulation hernia
4. Ileus due to inguinal hernia
5. Ileus due to food impaction

Case 2. A sixty-three-year-old female presented in our hospital for abdominal pain. She previously received surgical treatment more than ten times for Crohn disease. The latest laparotomy was conducted on October 2019. Laboratory test revealed white blood cells 7680/mm³, neutrophils 88.9%, CRP 0.66 mg/dL. She took CT for further investigation (Figs 2, 3).

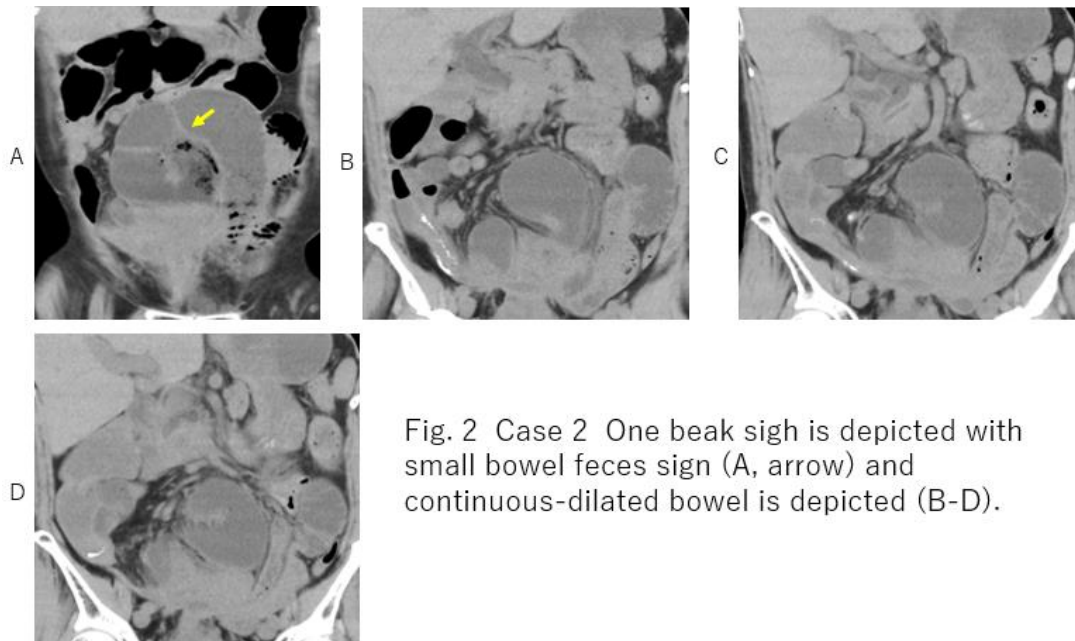


Fig. 2 Case 2 One beak sign is depicted with small bowel feces sign (A, arrow) and continuous-dilated bowel is depicted (B-D).

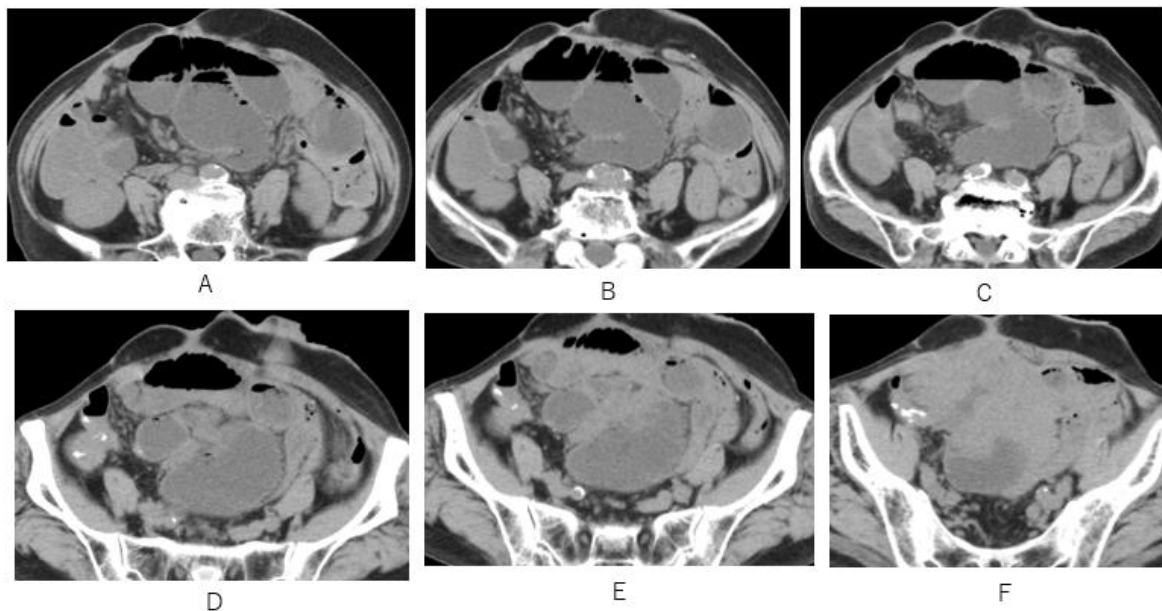


Fig. 3 Case 2 Dilated small bowel is depicted with difficulty to find out beak sign on axial CT.

What is imaging diagnosis?

1. Infectious bowel disease
2. Adhesive ileus
3. Strangulation hernia
4. Ileus due to inguinal hernia
5. Ileus due to food impaction

answer

2024.11.8