

## A Case of the 10 days

### Case 360

A seventy-seven-year-old male was transported to our hospital by ambulance car for high fever. He was found to be in the state of falling down in his own room. Laboratory test revealed urine test positive blood 3+, protein 2+, and blood test, CRP 0.81 mg/dL. He took abdomen CT for further investigation. (Figs. 1-3).

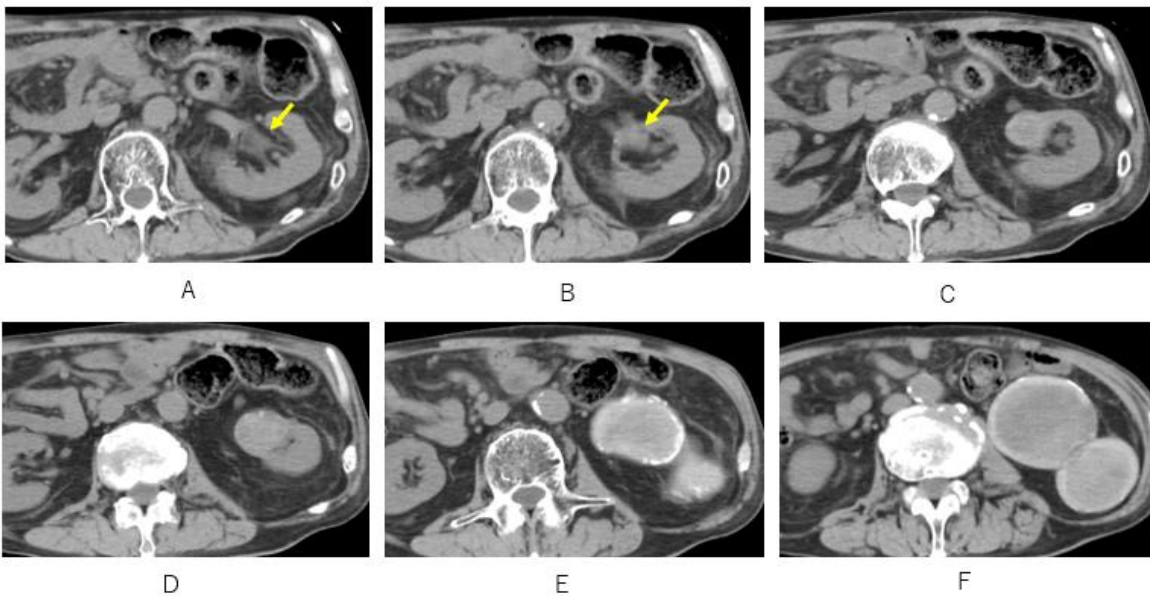


Fig.1 Cystic tumor with mural calcification (C-E) is arising from left urinary pelvis (arrow, A, B) on axial CT.

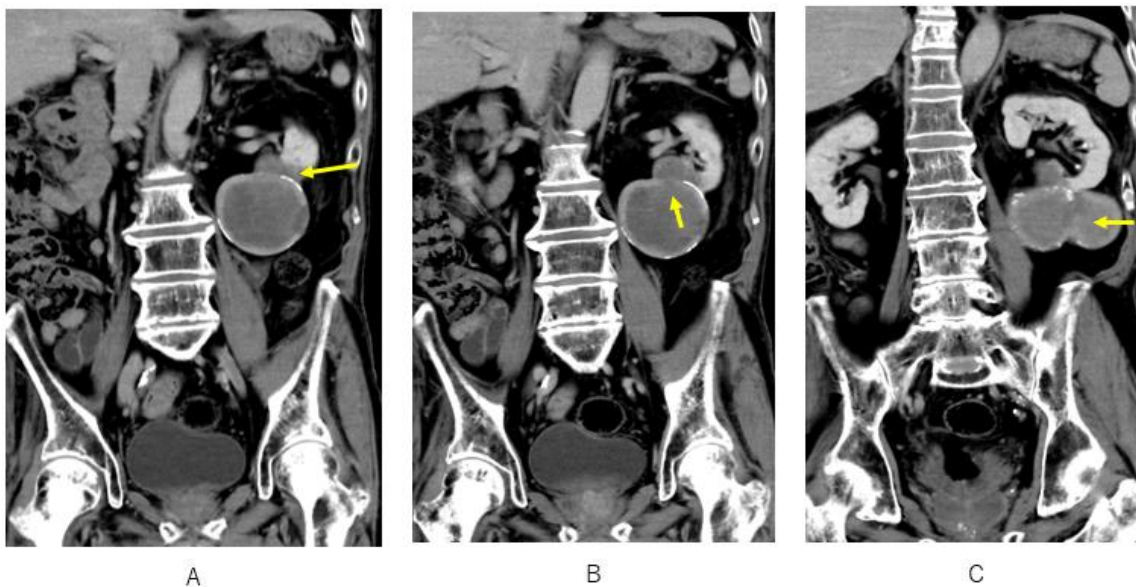


Fig.2 There is a pore route (arrow) between pelvis and cystic mass (A, B) and between cystic masses.

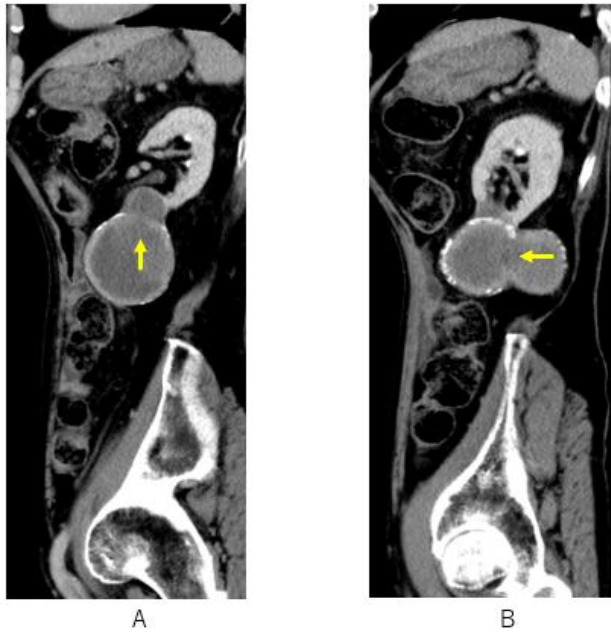


Fig 3. There is a pore route between cystic masses (arrow, A, B) on sagittal CT.

## What is imaging diagnosis?

---

1. Pelvic tumor
2. Renal cell carcinoma
3. Malignant fibrous histiocytoma
4. Chronic urinoma
5. Neurinoma

answer

2024.11.1