

## A Case of the 10 days

### Case 352

A fifty-nine-year-old male presented in our hospital for follow-up observation about his cardiac function. He was previously diagnosed dilated cardiomyopathy rather than ischemic cardiomyopathy. He got medication and diet program with limitation of salt and water. Laboratory test revealed improvement of BNP 1373.3 to 225.8 pg./mL and body weight 93.2 to 79.2 kg. He experienced cough and dyspnea at this time. He took CT for further investigation (Figs 1, 2).

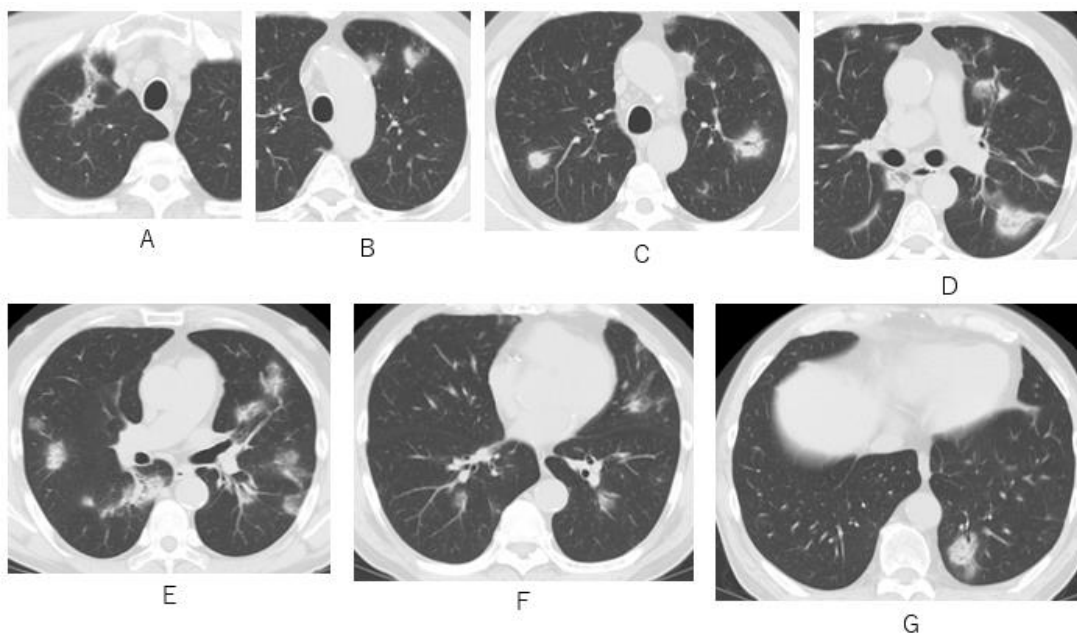


Fig.1 Multiple nodules with ill-defined margin including bronchogram traverse sign are depicted on axial CT (A-G).

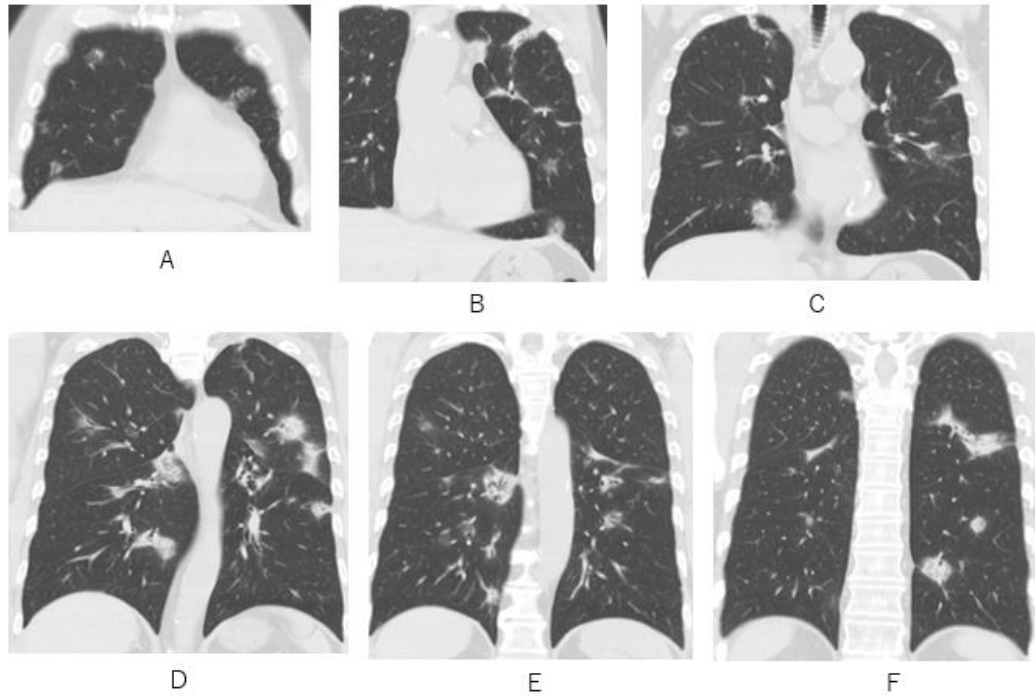


Fig.2 Multiple nodules with ill-defined margin including bronchogram traverse sign are depicted in the whole lung on coronal CT (A-G).

## What is possible imaging diagnosis?

1. BALT related lymphoma
2. Invasive mucinous adenocarcinoma
3. Sarcoidosis
4. Granulomatous polyangiitis
5. Septic lung

answer

2024.9.6