

A Case of the 10 days

Case 350

A fifty-seven-year-old male presented in our hospital for cough and dyspnea. He had smoked 20 cigarettes/day for twenty years. He stopped smoking at the end of last year. Instead, he began electric smoking. Soon after, respiratory symptoms emerged and gradually worsened. Laboratory test revealed LDH 387U/mL, white blood cells 10660/mm³, CRP 1.74 mg/dL. Three days later, it revealed elevation of LDH 412U/mL, CRP 8.10 mg/dL, Blood gas analysis revealed PO₂ 56.2 mmHg, PCO₂ 29.4mmHg PH 7.409. He took chest CT (Figs.1- 4) for further investigation.

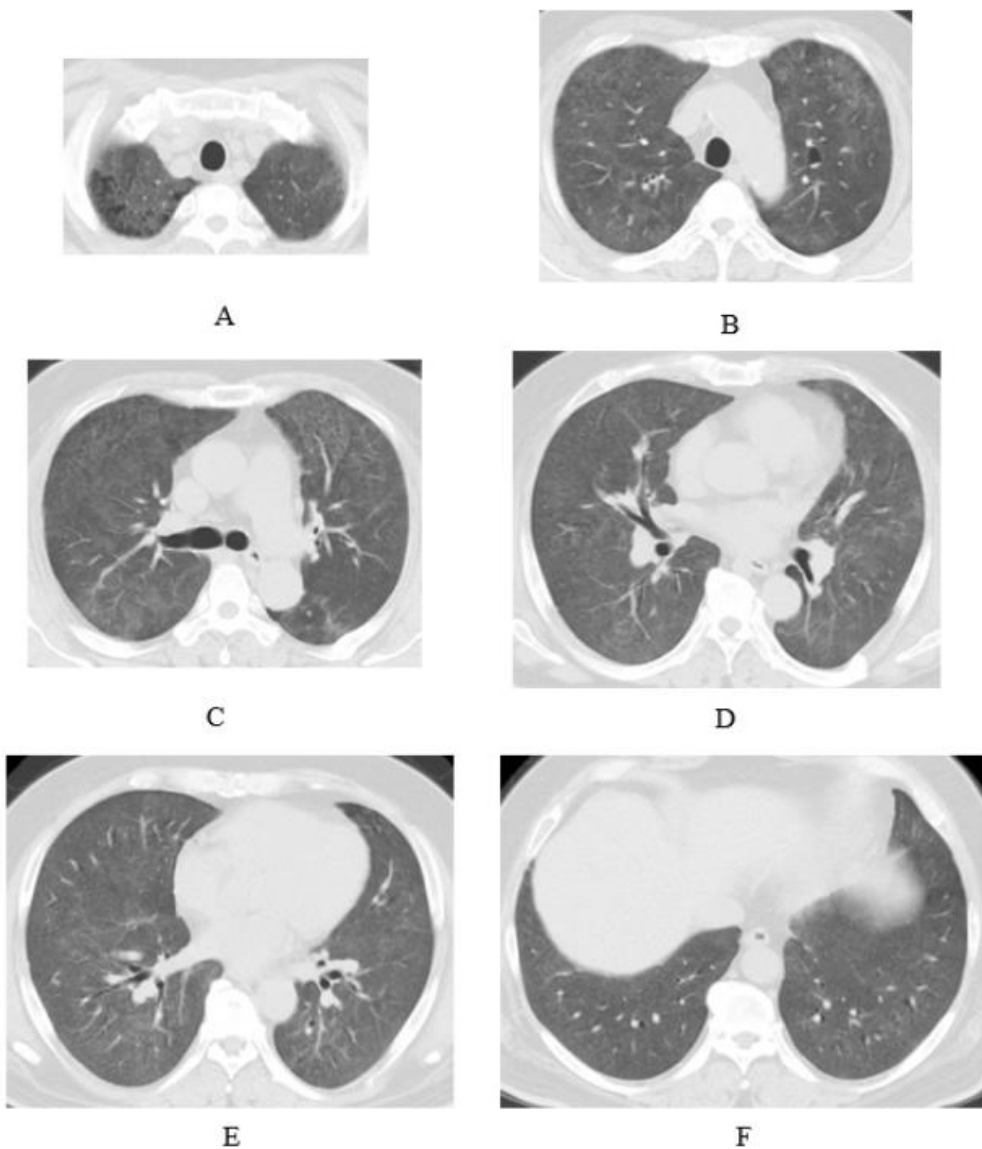


Fig.1 Axial chest CT images depict ground glass opacity in the whole lung (A-F). Emphysematous radiolucent areas are found in apical regions (A).

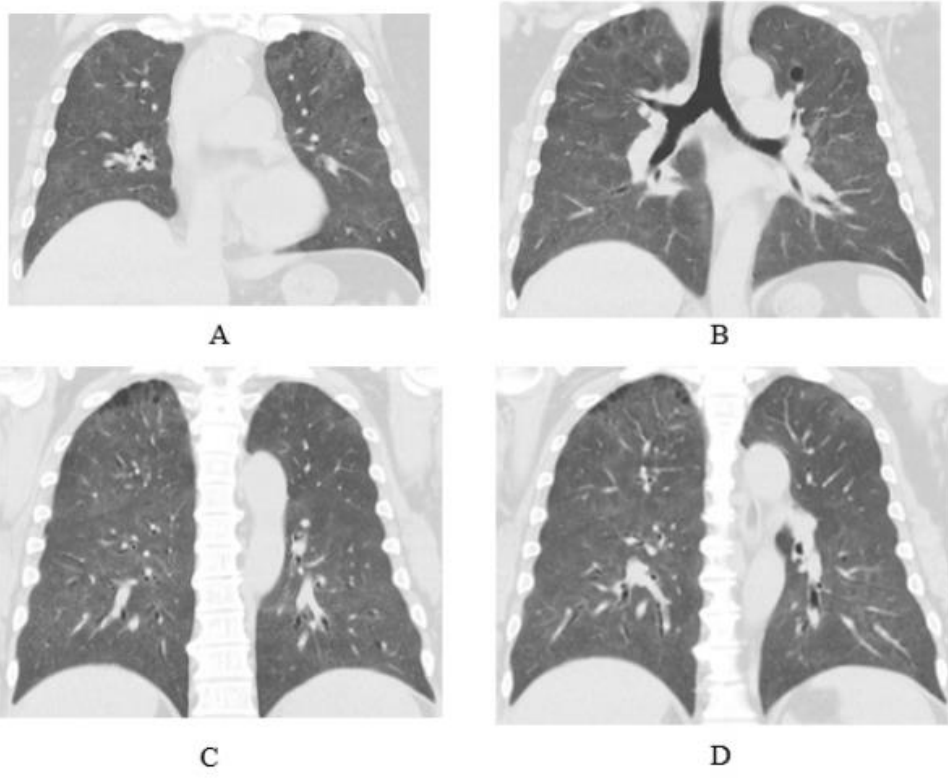


Fig.2 Coronal chest CT images depict ground glass opacity in the whole lung (A-D).

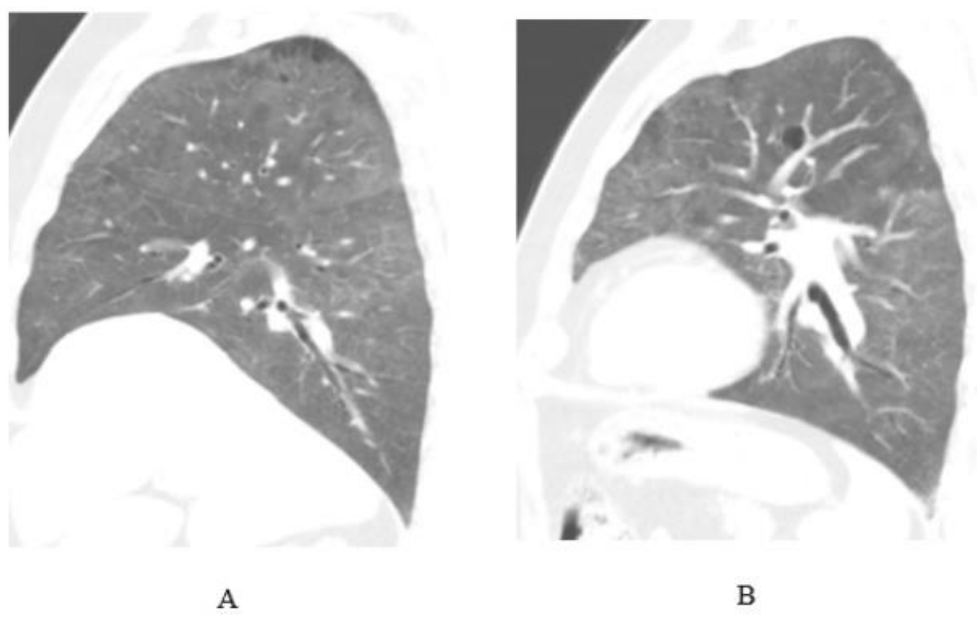
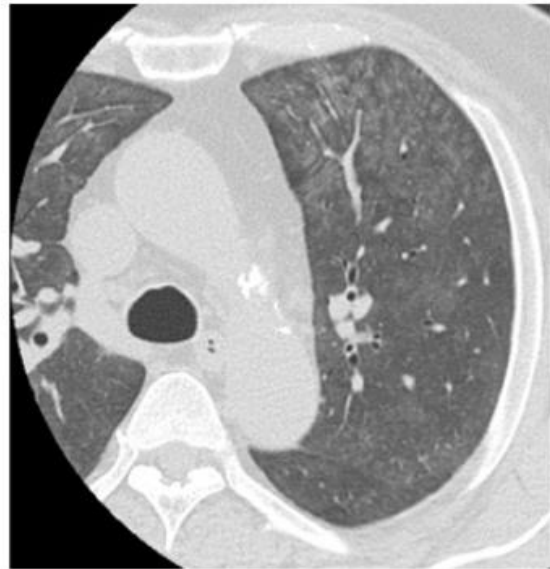


Fig.3 Sagittal chest CT images depict ground glass opacity in the whole lung (A,B).



A



B

Fig. 4 High-resolution chest CT depict ground glass opacity is being formed by expanding from centrilobular opacity to pan-lobular opacity.

What is clinical diagnosis?

1. Bacterial pneumonia
2. Virus pneumonia
3. Mycotic pneumonia
4. Mycoplasma
5. Hypersensitivity pneumonia

answer

2024.8.23