

A Case of the 10 days

Case 346

A forty-one-year-old female presented in our hospital for elevation of anti-P53 antibody of 1.5 U/mL (< 1.3 U/mL) in health care examination. She was indicated ovarian cyst in a local hospital. Our gynecologist advised her to take pelvic MRI for further examination (Figs. 1, 2)

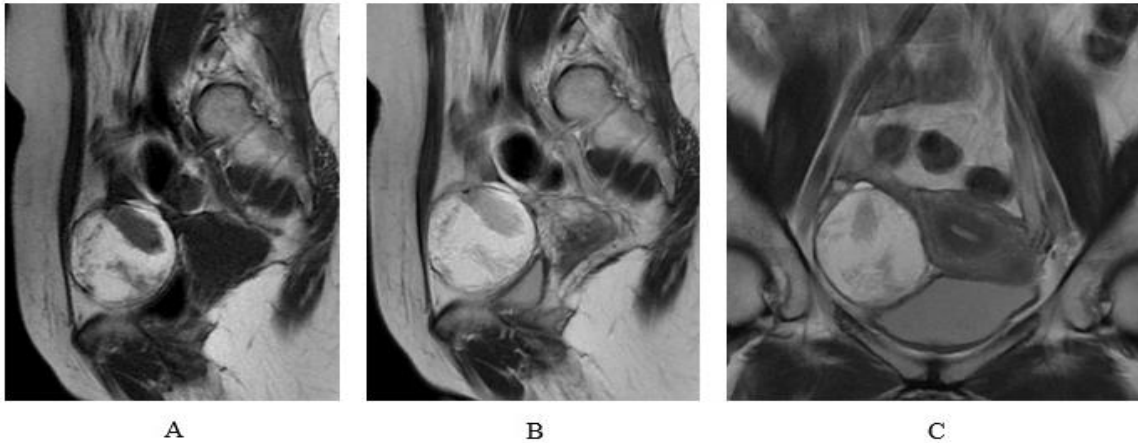


Fig.1 Sagittal T1WIMRI, sagittal T2WIMRI, and coronal T2WIMRI depict a 5 cm sized mass with high signal intensity containing low signal intensity components at right ovary.

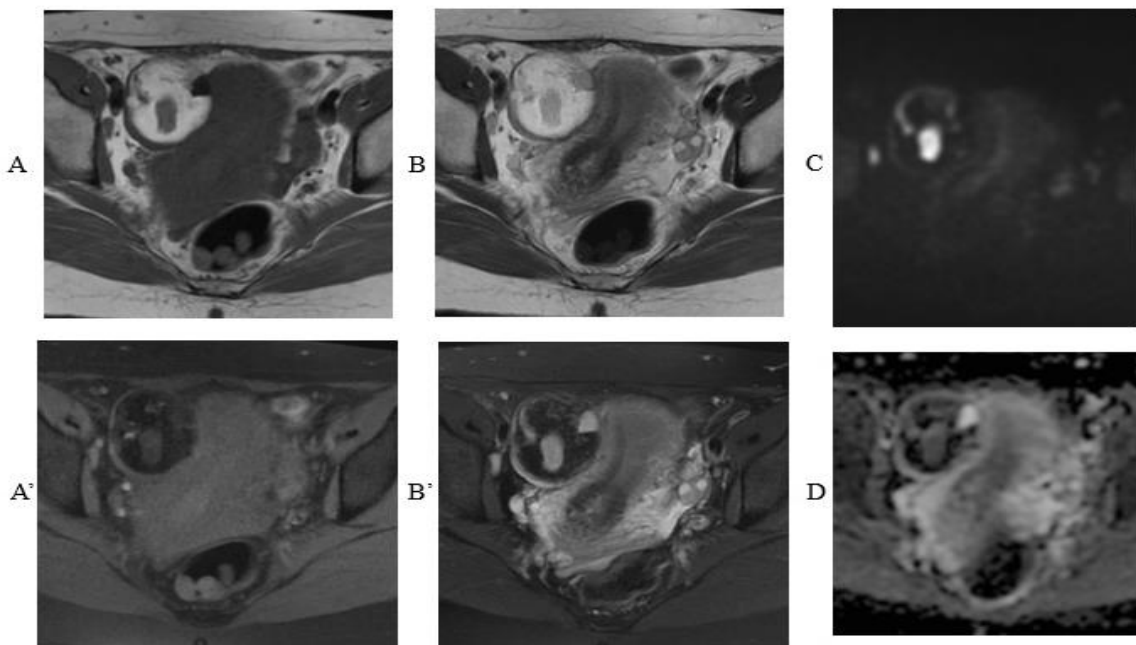


Fig.2 A mass with high signal intensity containing low signal intensity components is depicted on T1WI (A) and T2WI (B) whose high signal intensity is repressed on fat suppression T1WI(A') and fat suppression T2WI(B'). High signal intensity corresponded to low signal intensity component in the mass is depicted (C). ADC value corresponded to its area is lowering (ADC values, 0.536).

What is imaging diagnosis on pelvic MRI?

1. Mucinous cyst adenoma
2. Serous cyst adenoma
3. Endometrial cyst
4. Dermoid cyst
5. Mature cystic teratoma with malignant transformation

answer

2024.7.26