

A Case of the 10 days

Case 345

An eighty- two-year-old male presented without no remarkable symptoms in our hospital for routine checking of pancreas cyst and pancreatic duct. He was previously diagnosed chronic obstructive pulmonary disease for long-term smoking, atrium-ventricular block treated with cardiac pacemaker, and pancreatic cyst with mild dilatation of pancreatic duct. The routine abdomen CT eight years before (Fig.1) and at present (Figs. 2, 3) are demonstrated.

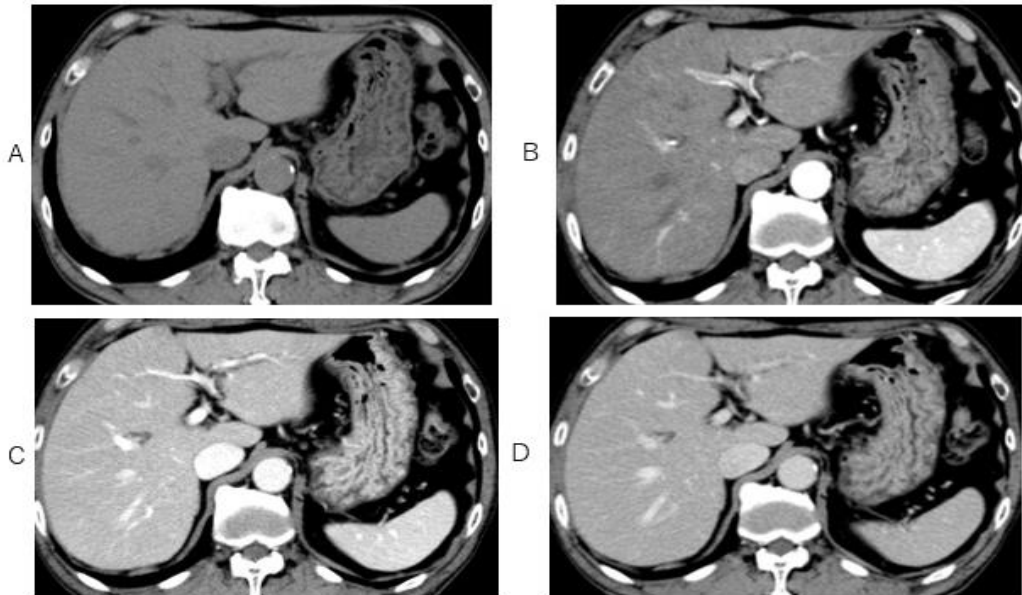


Fig. 1 Mild-dilated left biliary tract is depicted on non-enhanced CT (A) and contrast-enhanced CT in arterial phase (B), portal phase (C), and delayed phase (D).

2016

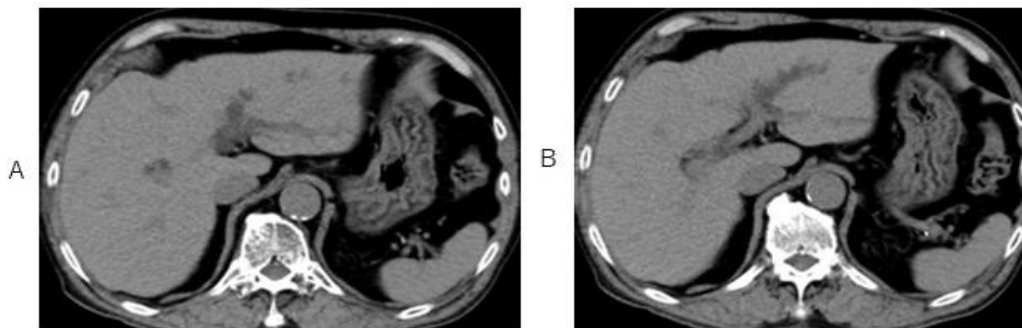




Fig. 2 Eight years later, markedly dilated left biliary tract is depicted on non-enhanced CT (A-C).

2024

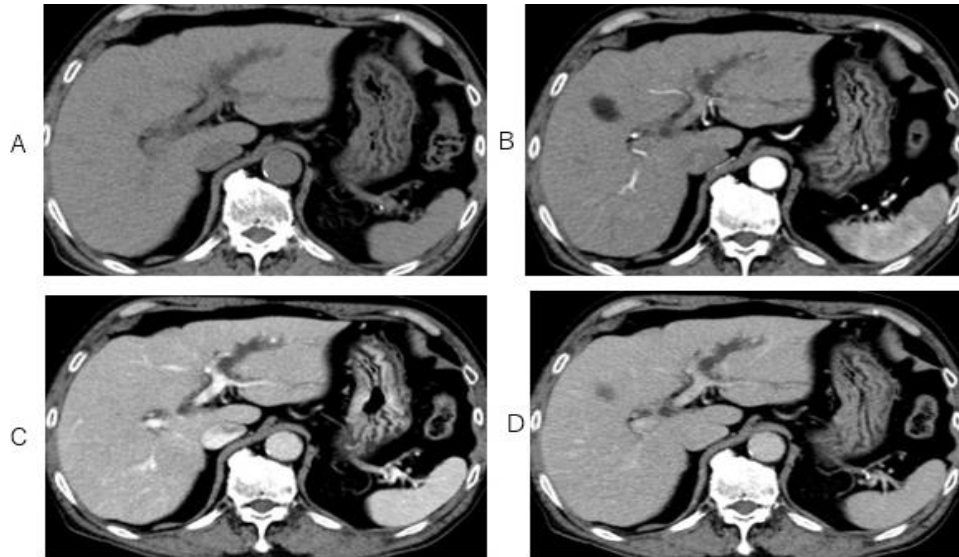


Fig. 3 Markedly dilated left biliary tract is depicted on non-enhanced CT (A) and contrast-enhanced CT in arterial phase (B), portal phase (C), and delayed phase (D).

What is imaging diagnosis on abdomen CT?

1. Cholangitis
2. Hepatolithiasis
3. Intraductal papillary mucinous neoplasm
4. Cholangiocarcinoma

answer

2024.7.19