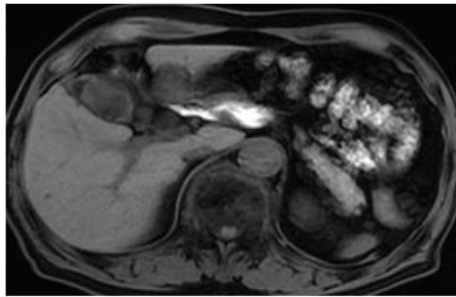


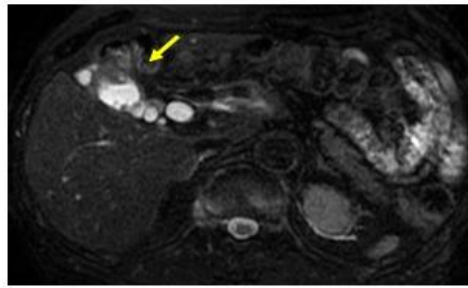
A Case of 10 days

Case 342

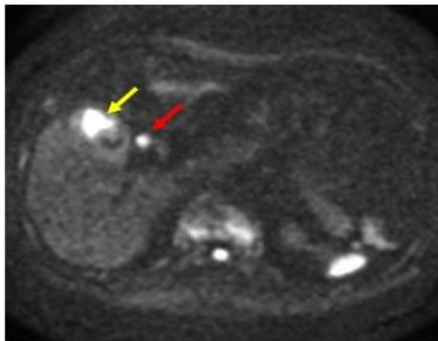
A seventy-five-year-old male presented in our hospital for gradually thickened gall bladder mural by abdominal ultrasonography compared to last year. Laboratory test revealed elevation of CA 19-9, 980U/mL from 77 U/mL of last year. He took contrast-enhanced CT and MRI (Fig.1)



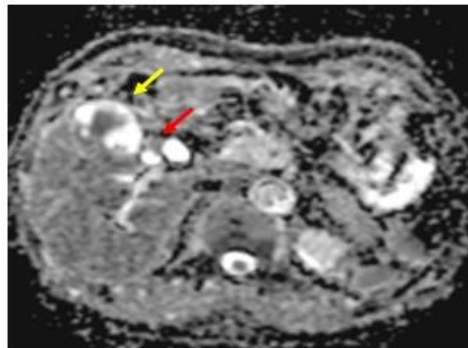
T1WI



Fat suppression T2WI



DWI



ADC

Gall bladder mass
ADC

1.033
0.867–1.112

Lymph node
ADC 1.339

Liver
parenchyma
1.164–1.427

Fig.1 gall bladder mass with swollen lymph node is depicted on T1WI, fat suppression T2WI, Diffusion WI and ADC mapping.

What is imaging diagnosis on abdominal MRI?

1. Cholecystitis
2. Xanthogranulomatous cystitis
3. Gall bladder cancer
4. Adenomyomatosis

answer

2024.6.28