

## A Case of 10 days

### Case 339

A seventy-four-year-old female was transported to our hospital for general fatigue. She was in hospitalization in a local hospital for Parkinson disease. She was in unrest tremor of mainly lower extremity with uttering voices. She took brain CT for further investigation (Figs. 1-3).

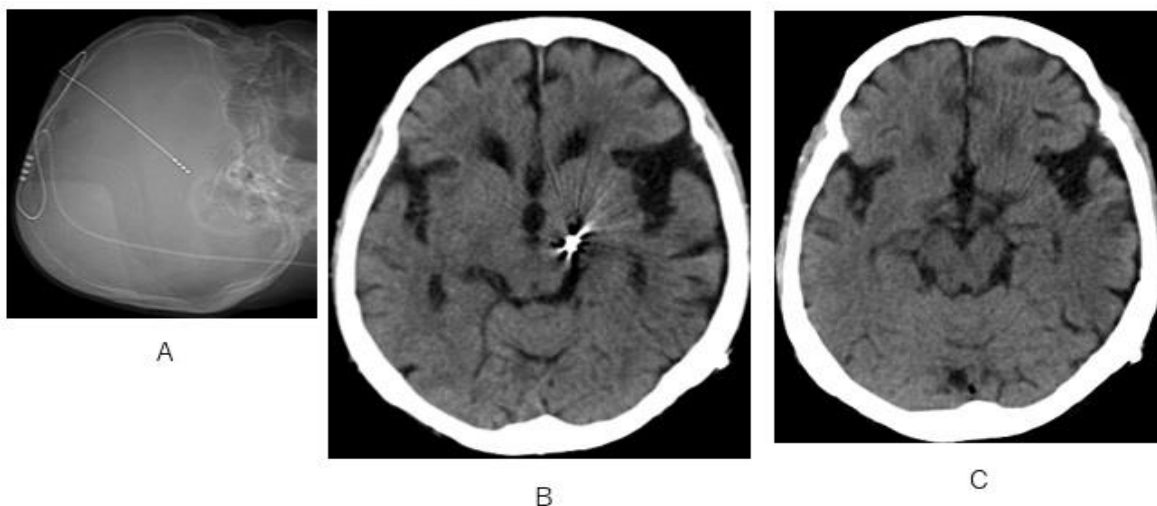


Fig.1 Skull radiograph depicts an electrode is inserted into the brain (A).  
The tip of electrode is positioned near left cerebrum peduncle (B, C).

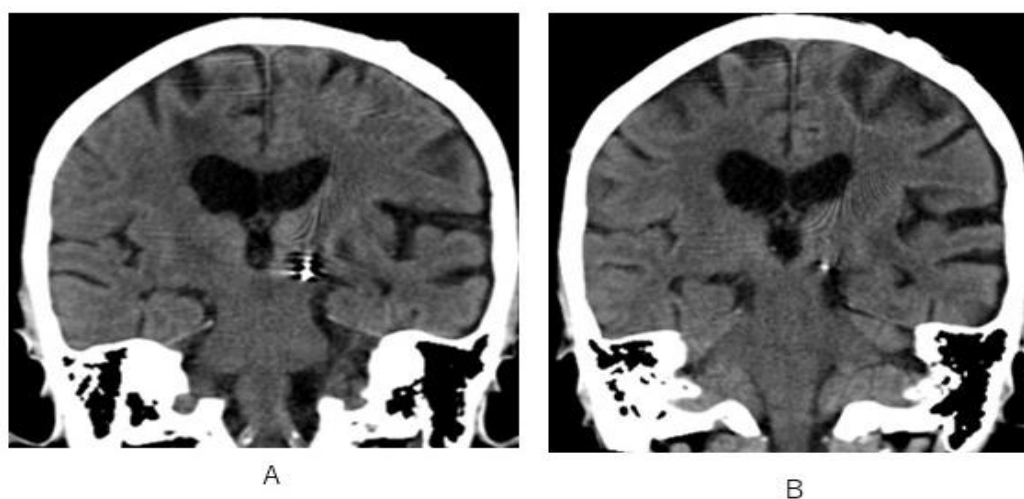
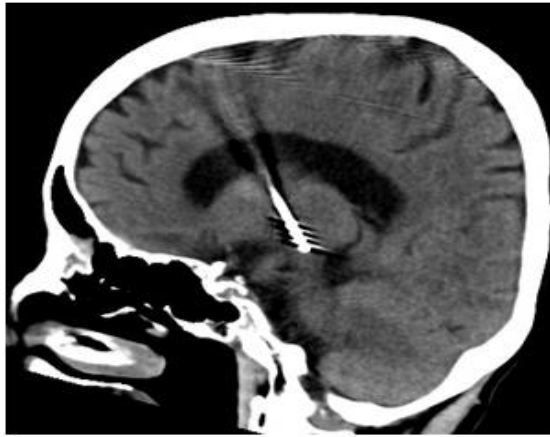
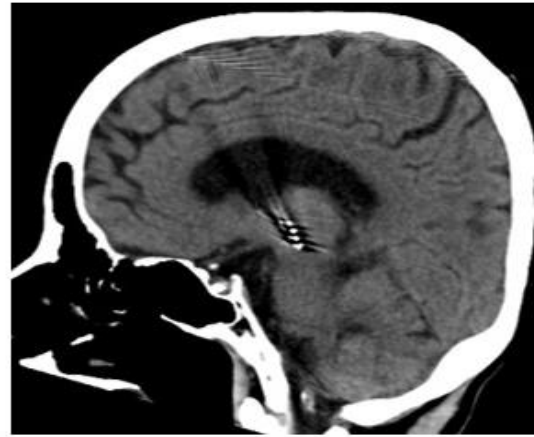


Fig.2 The tip of the electrode is placed at subthalamic region.



A



B

Fig.3 The electrode tip is placed at the region near middle brain beyond thalamus.

On brain CT, electrode was inserted. What portion of electrode tip is situated?

1. Thalamus
2. Subthalamic nucleus
3. Globus pallidus
4. Cerebrum peduncle

answer

2024.6.7