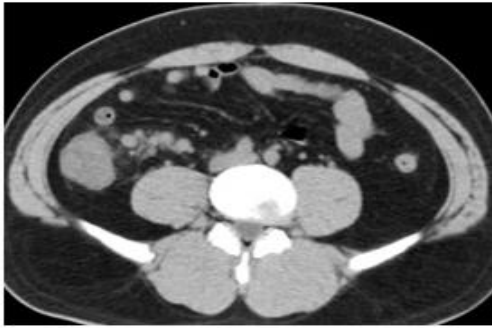


## A Case of 10 days

### Case 336

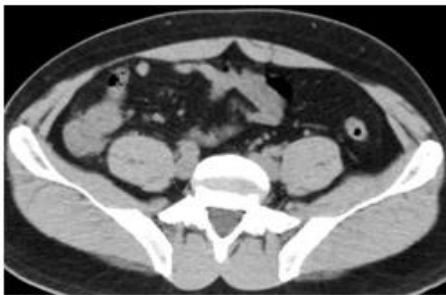
A thirty-three-year-old male presented in our hospital for abdominal pain, diarrhea, and fever. He took abdominal CT (Figs 1. 2)



A

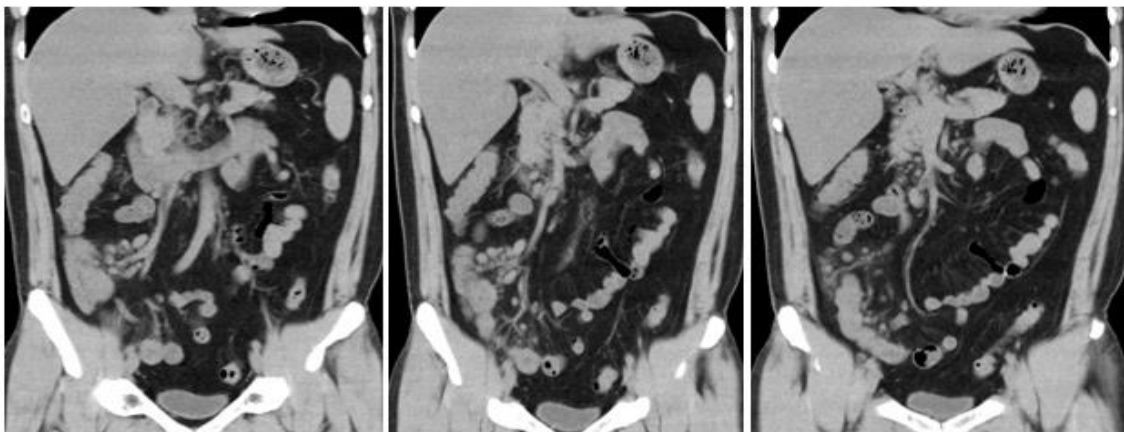


B



C

Fig. 1 Axial images of lower abdomen depict edematous mural thickening of cecum and ileum end (A-C) with swollen several lymph nodes (A, B).



A

B

C

Fig.2 Coronal abdominal images depict cecum and ileum with edematous mural thickening and swollen lymph nodes (A-C).

---

What causes infectious bowel disease on ileum end and cecum?

---

1. Rota virus
2. Noro virus
3. Food toxin
4. Salmonella
5. Clostridium difficile

answer

2024.5.17