

A Case of 10 days

Case 335

A seventy-five-year-old male presented in our hospital for follow-up check of gall bladder mural thickness. Seven months before, he was indicated gall bladder mural thickness found out on abdominal ultrasound by local clinic. Laboratory test revealed no abdominal findings except CA19-9 980 U/mL (< 37). He took abdominal ultrasound and MRI (Figs)

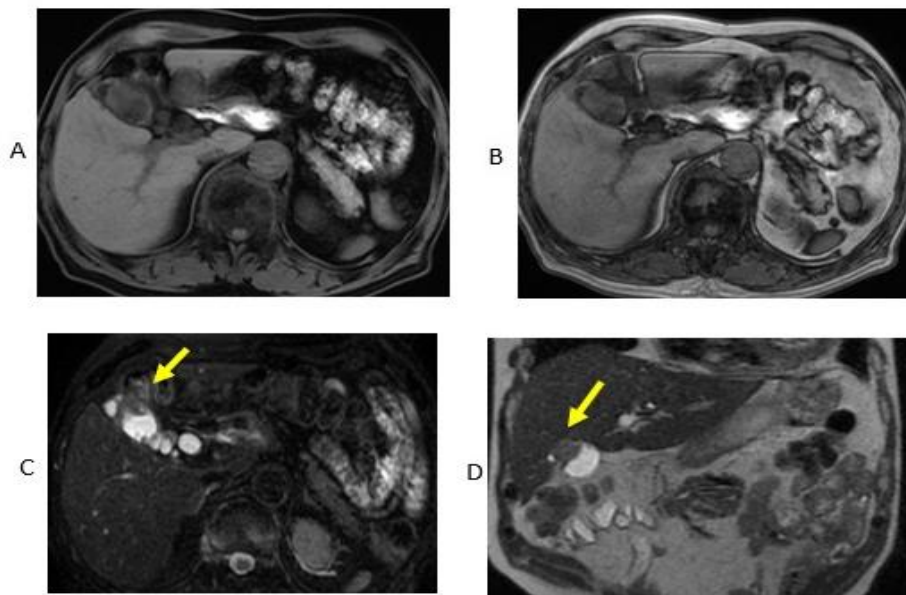


Fig.1 No mass in gall bladder is visualized on T1WIMRI in phase (A) and T1WIMRI out of phase (B). A lesion with low signal intensity (arrow) in gall bladder is depicted on axial fat suppression T2WI and coronal T2WI.

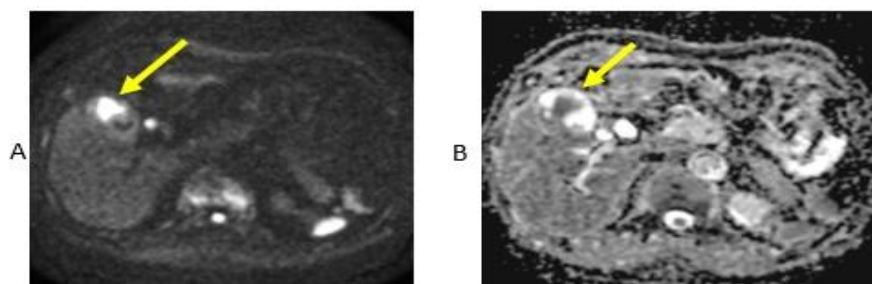


Fig.2 The lesion in gall bladder is depicted high signal intensity on diffusion weighted imaging (DWI) (arrow) and its ADC values are lowering (0.8691 – 1.112) compared to liver parenchyma (arrow) (1.164 – 1.427).

What is possible imaging diagnosis?

1. **Chronic cholecystitis**
2. **Adenomyomatosis**
3. **Gall bladder cancer**
4. **Xanthogranulomatous cystitis**

answer

2024.5.10