

A Case of 10days

Case 333

A fifty-six-year-old male presented in our hospital for suspicious enamel epithelial tumor, indicated when he received health-care check in local health center. He took face CT for further investigation (Figs 1-3).

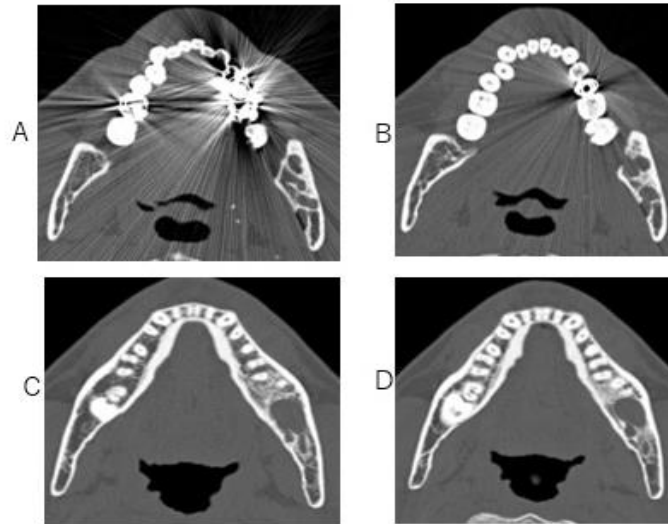


Fig.1 Face CT axial images depict cystic lesions with soap bubble appearance in left mandibular bone (A-D).

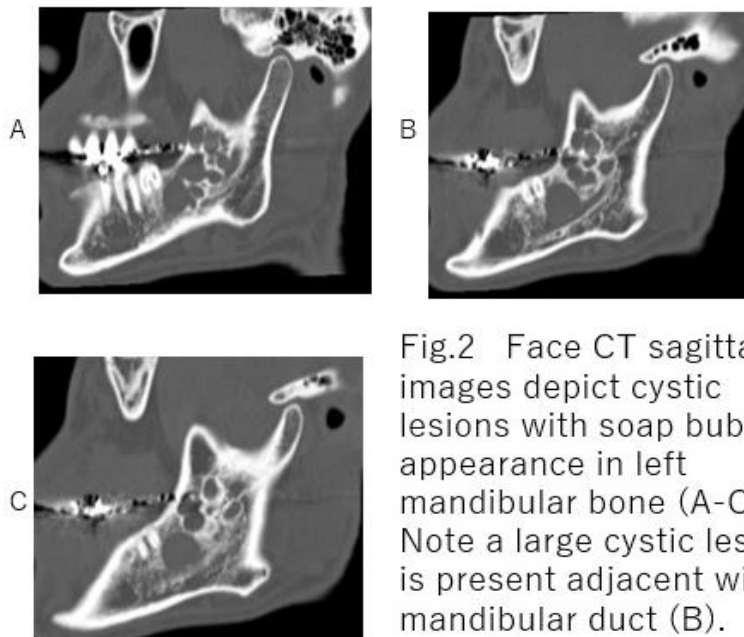


Fig.2 Face CT sagittal images depict cystic lesions with soap bubble appearance in left mandibular bone (A-C). Note a large cystic lesion is present adjacent with mandibular duct (B).

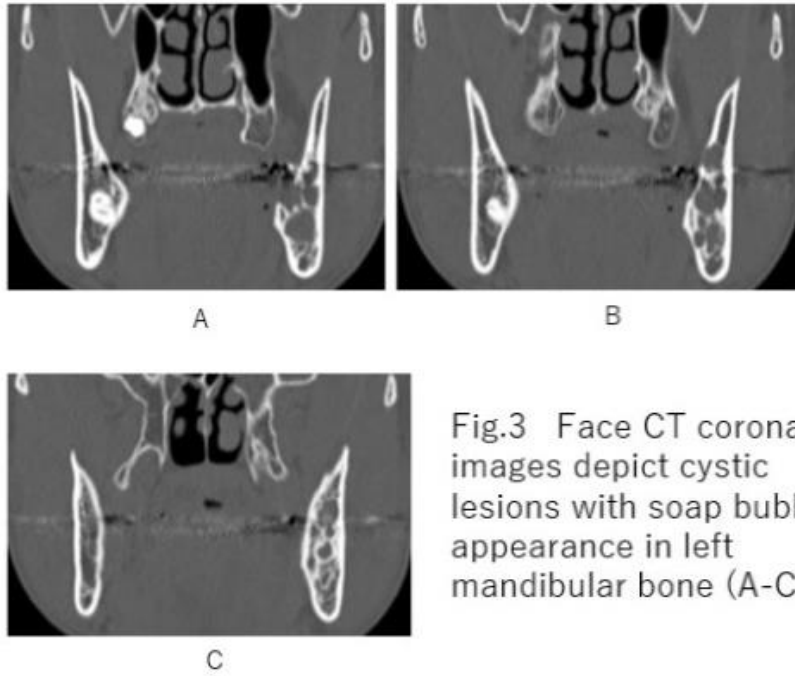


Fig.3 Face CT coronal images depict cystic lesions with soap bubble appearance in left mandibular bone (A-C).

What is imaging diagnosis?

1. Enamel epithelial tumor (Ameloblastoma)
2. Radicular cyst
3. Dentigerous cyst
4. Odontogenic keratocyst

answer

2024.4.26