

A Case of the 10 days

Case 242

A sixty three year-old male presented in our hospital for disorder of olfactory sensation. He first realized it last January. As past illness history, he experienced bronchial asthma, middle lobe syndrome and dermatofibrosarcoma protuberans. Laboratory test revealed white blood cells 4750/mm³, eosinophils 12.4%, CRP < 0.01 mg/dL. He took face CT for further investigation.

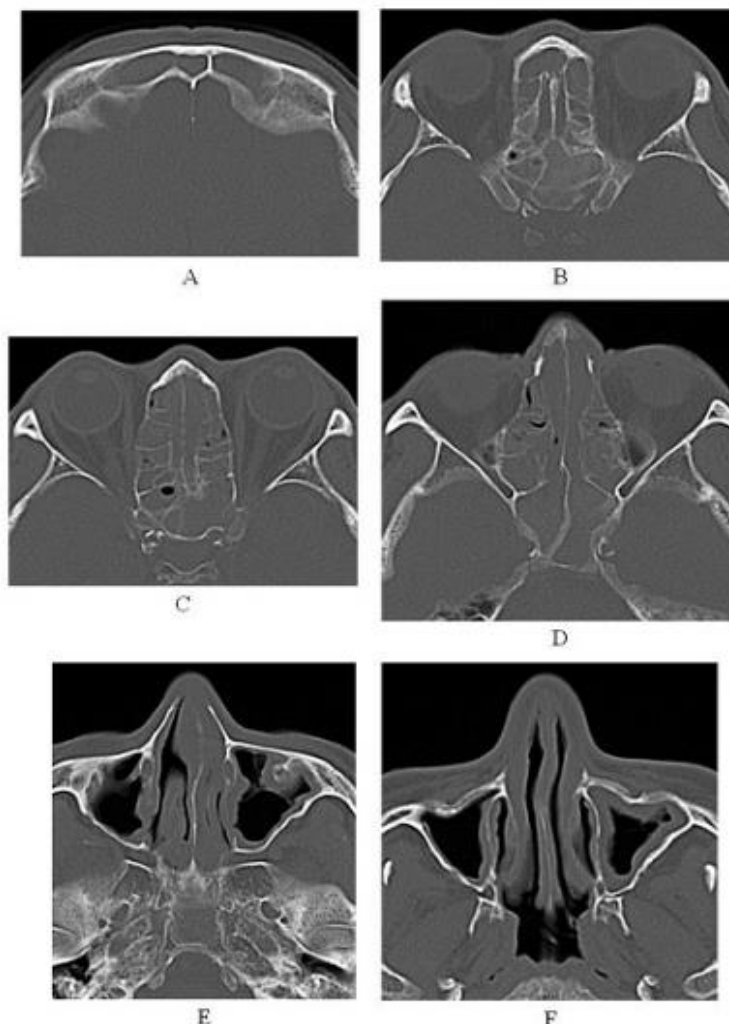


Fig. 1 Axial images of paranasal sinus depict frontal sinus (A) ethmoid sinus (B-C), sphenoid sinus (B-D) are occupied by soft tissue density. Note mucosal thickening is shown in maxillary sinus wall but the lumen is relatively preserved (E, F).

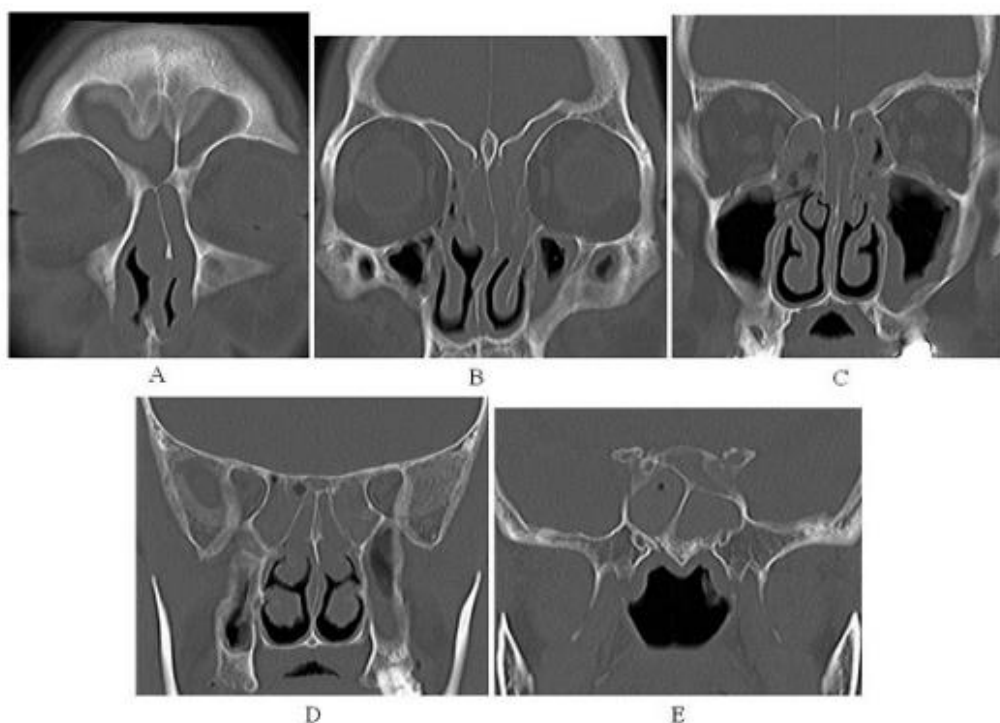


Fig. 2 Coronal images of paranasal sinus depict frontal sinus (A) ethmoid sinus (A-D), sphenoid sinus (D, E) are occupied by soft tissue density. Note mucosal thickening is shown in maxillary sinus wall but the lumen is relatively preserved (C). Further, nasal superior concha is edematous thickened (D).

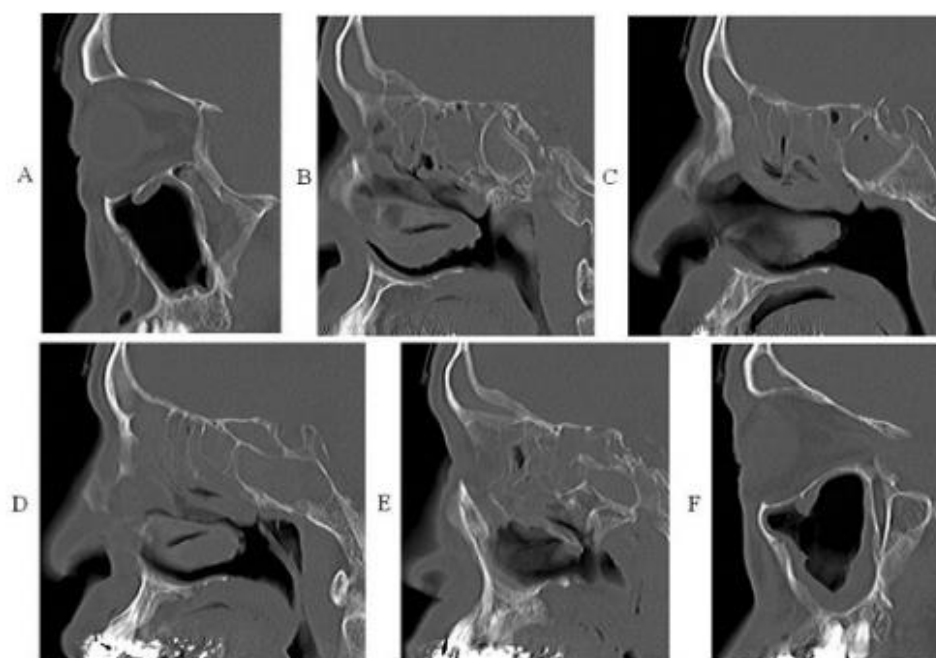
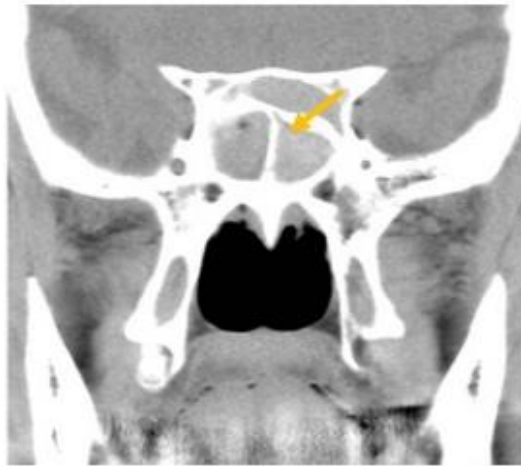


Fig. 3 Sagittal images of paranasal sinus depict frontal sinus (D-F) ethmoid sinus (D, E), sphenoid sinus (B-E) are occupied by soft tissue density. Note mucosal thickening is shown in maxillary sinus wall but the lumen is relatively preserved (A, F). Further, nasal superior concha is edematous thickened (C, D).

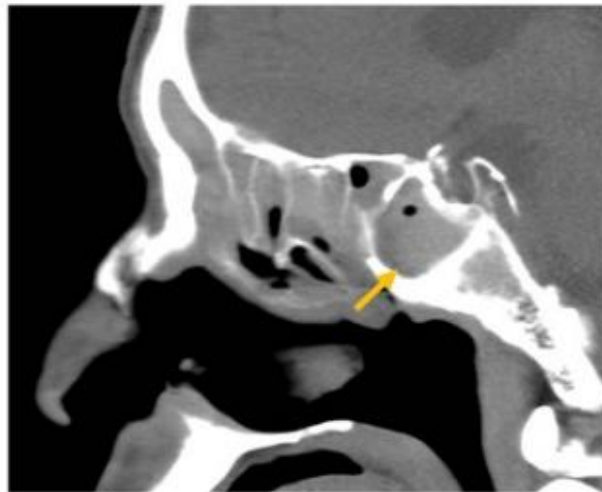


A

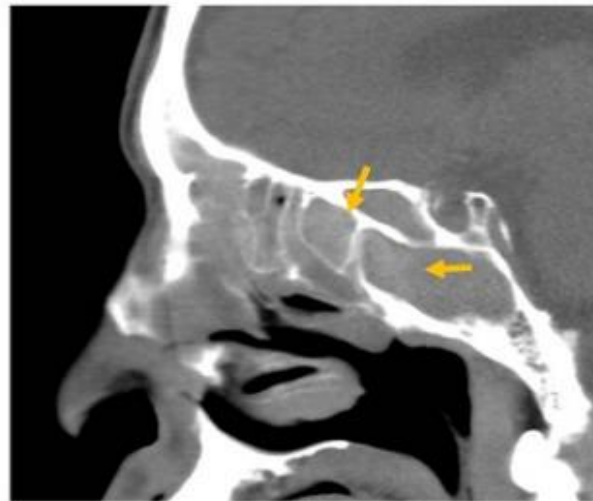


B

Fig. 4 An axial image (A) and a coronal image (B) of paranasal CT depict thick mucosal thickening or fluid effusion occupying in the ethmoid sinus (A) and sphenoid sinus (B). Note the lesion includes a little high component (arrow, A,B).



A



B

Fig 5 Sagittal images of paranasal CT (right A, left B) depict thick mucosal thickening or fluid effusion occupying in the ethmoid sinus and sphenoid sinus. Note the lesion includes a little high component (arrow, A,B).

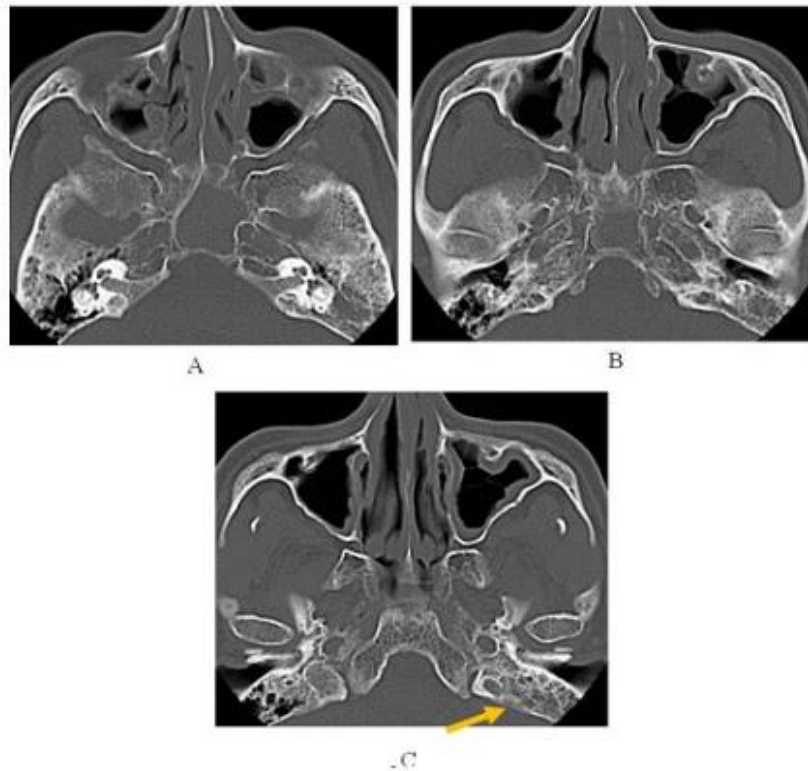


Fig. 6 Axial images of para-sinus depict mastoid sinus occupying fluid and/or mucosal thickening.

Note: Left mastoid air cells are occupied by fluid, indicating active inflammation (arrow).

What is your clinical diagnosis ?

1. Bacterial sinusitis
2. Viral sinusitis
3. Fungus sinusitis
4. Chronic eosinophilic rhinosinusitis
5. Malignant lymphoma

answer